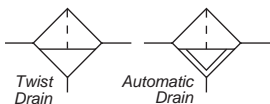
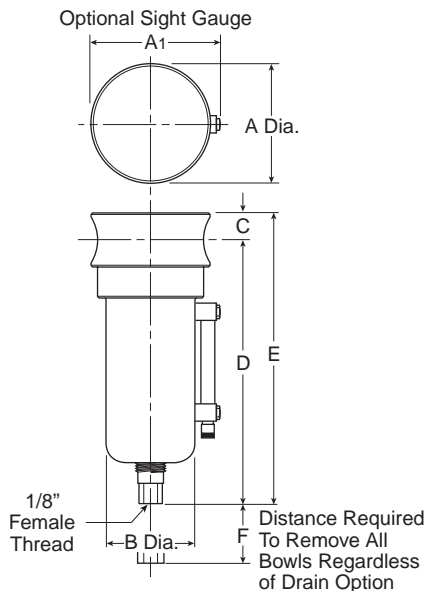


F10 Filter – Standard



Features

- Stainless Steel Construction Handles Most Corrosive Environments
- Meets NACE Specifications MR-01-75/ISO 15156
- 1/8" Female Threaded Drain
- Low Temperature Version Available
- High Flow: 1/2" - 70 SCFM[§]



Port Size	NPT		BSPP	
	Manual Twist Drain	Automatic Float Drain	Manual Twist Drain	Automatic Float Drain
1/2"	Metal Bowl With Sight Gauge			
	F10-04WJSS	F10-04WJRSS	F10G04WJSS	F10G04WJRSS

F10 Filter Dimensions		
A 2.38 (60)	A1 2.50 (64)	B 1.75 (44)
C .56 (14)	D 5.00 (127)	E 5.56 (141)
F 2.12 (54)		

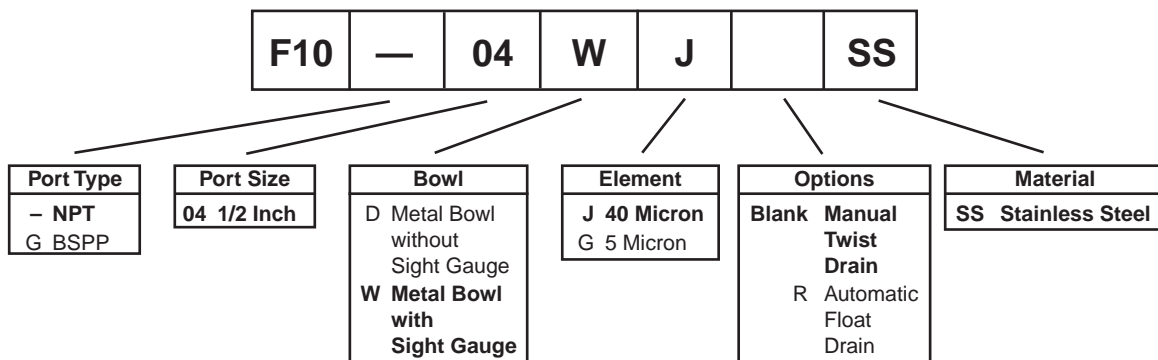
Bold Items are Most Popular.

For other models refer to ordering information below.

[§] SCFM = Standard cubic feet per minute at 90 PSIG inlet and 5 PSIG pressure drop.

inches
(mm)

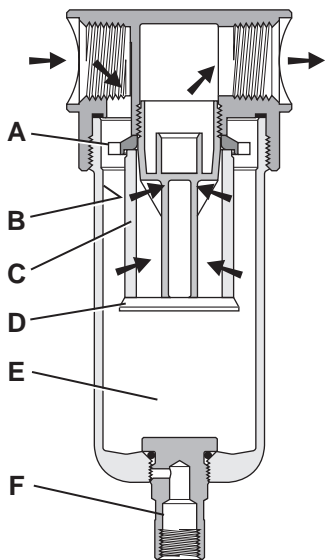
Ordering Information



BOLD ITEMS ARE MOST POPULAR.



Operation



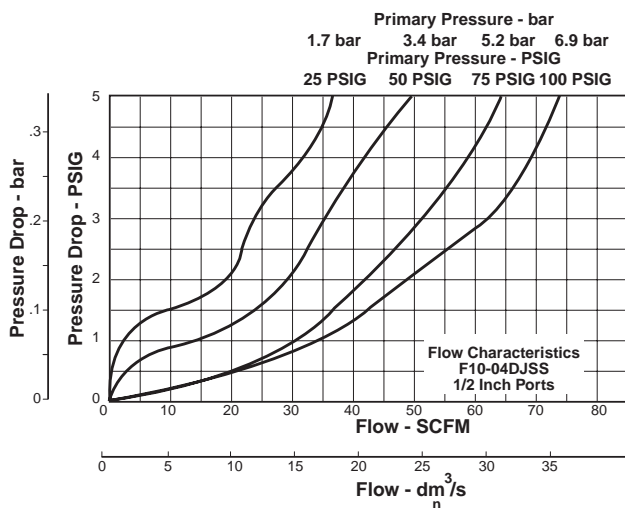
First Stage Filtration:

Air enters at inlet port and flows through deflector plate (A) which causes a swirling action. Liquids and coarse particles are forced to the bowl interior wall (B) by the centrifugal action of the swirling air. They are then carried down the bowl wall by the force of gravity. The baffle (D) separates the lower portion of the bowl into a “quiet zone” (E) where the removed liquid and particles collect, unaffected by the swirling air, and are therefore not reentrained into the flowing air.

Second Stage Filtration:

After liquids and large particles are removed in the first stages of filtration, the air flows through element (C) where smaller particles are filtered out. The filtered air then passes downstream. Collected liquids and particles in the “quiet zone” (E) should be drained before their level reaches a height where they would be reentrained in the flowing air. This can be accomplished by unscrewing the drain valve (F) slightly until the liquid begins to drain.

Technical Information



F10 Filter Kits & Accessories

Drain Kits –

- Automatic Float Drain SA10MDSS
- Manual Twist Drain–
- Small (Old) SA600Y7-1SS
- Large (New) SAP05481

Filter Element Kits –

- Particulate (40 Micron) EK55J
- Particulate (5 Micron) EK55G

Pipe Nipple – 1/2" 316 Stainless Steel 616A28-SS

Specifications

- Bowl Capacity 4.0 Ounces
- Filter Rating 40 Micron
- Sump Capacity 1.7 Ounce
- Port Threads 1/2 Inch
- Pressure & Temperature Ratings –
- Manual Twist Drain (D) 0 to 300 PSIG (0 to 20.7 bar)
 0°F to 180°F (-18°C to 82°C)

- Manual Twist Drain (W)..... 0 to 250 PSIG (0 to 17.2 bar)
 0°F to 150°F (-18°C to 66°C)
- Automatic Float Drain 15 to 175 PSIG (1 to 12 bar)
 32°F to 150°F (0°C to 66°C)

Note: Air must be dry enough to avoid ice formation at temperatures below 32°F (0°C).

Weight 1.9 lb. (0.85 kg)

Materials of Construction

- Body316 Stainless Steel
- Bowls316 Stainless Steel
- Deflector Acetal
- Drain316 Stainless Steel
- Element Holder Acetal
- Filter Element Polyethylene
- Seals Fluorocarbon
- Sight Gauge Isoplast

