

# QUICK EXHAUST VALVES

(For Pneumatic Application Only)



**QE-3-316**  
1/4" NPT x 3/8" NPT



**QE-5-316**  
1/2" NPT x 3/4" NPT



**QE-6-316**  
3/4" NPT x 1" NPT

### General Description

A Quick Exhaust Valve is a 3/2 valve with extra large exhaust orifice, designed to be fitted directly at a cylinder port connection. The main purpose of a Quick Exhaust Valve is to get extra fast movement of the cylinder rod or valve actuator.

### Temperature range:

QE-3, QE-3-316 -20°F to +200°F  
 QE-5, QE-5-316 (-29°C to +93°C)  
 QE-6 -30°F to +350°F  
 (-34°C to +177°C)

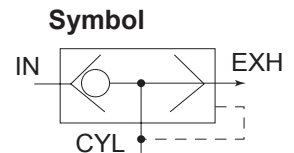
### Functional Description

A quick Exhaust Valve is a three-ported valve with one inlet port, one cylinder port and a larger exhaust port.

When the inlet port is pressurized, the exhaust port is closed by the "Flapper" - which is a soft-material seal - and the inlet port is connected to the cylinder port.

When pressure falls at the inlet of the Quick Exhaust Valve the cylinder port is automatically opened to the exhaust and the cylinder is rapidly depressurized.

Weights	lbs (kg)
QE-3	1.12 (0.53)
QE-3-316	0.81 (0.37)
QE-5-316	2.16 (0.98)
QE-6-316	2.44 (1.11)



### Sizes / Connections / Product Numbers & Pressures / Materials / Flow

Size		PRODUCT NUMBER	PRESSURES	FLOW Cv (Kv)		MATERIALS		
Inlet & Cyl	Exhaust			Inlet	Exhaust	Body	Seals	Screws & Misc
1/4" NPT	3/8" NPT	QE-3	5-150 psi (0.35 - 10 bar)	3.0 (43.5)	3.3 (48)	Electroless Nickel plated Brass	FKM (Fluorocarbon) O rings CR (Neoprene) coated nylon flapper	316 Stainless Steel
1/4" NPT	3/8" NPT	QE-3-316	5-150 psi (0.35 - 10 bar)			Investment cast Stainless Steel (conforms to NACE MR-01-75)		
1/2" NPT	3/4" NPT	QE-5-316	5-150 psi (0.35 - 10 bar)	3.8 (55)	8.8 (128)	316L Stainless Steel	FKM (Fluorocarbon) O rings CR (Neoprene) single lip seal	316 & 18-8 Stainless Steel
3/4" NPT	1" NPT	QE-6-316	15-175 psi (1 - 12 bar)	4.6 (66)	13.6 (195)			