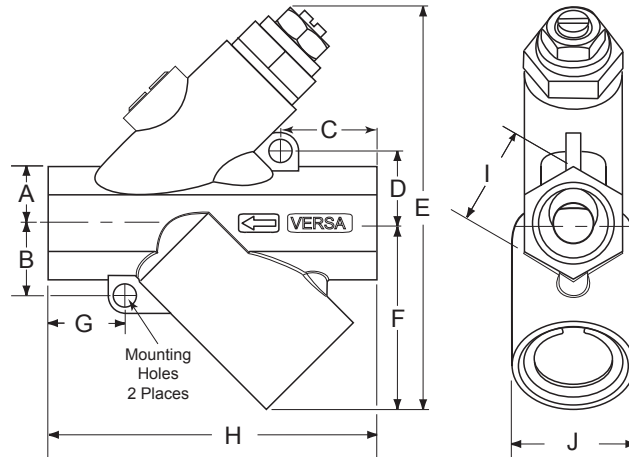


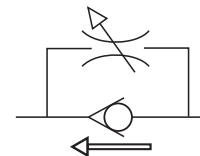
FLOW CONTROL VALVE

(For Pneumatic Application Only)

a unique Flow Control Valve, made of 316 Stainless Steel



Symbol



Arrow signifies controlled flow direction

General Description

Versa Products' Flow Control Valve (FCV) is a 316 stainless steel, NACE compliant simple device combining a check and needle valve to accomplish speed control in pneumatic actuators and cylinders.

The FCV allows unrestricted full flow in one direction and adjustable flow in the reverse.

Versa utilizes an investment cast 316 design to maximize flow and controllability while reducing overall weight. Standard sealing is fluorocarbon for durability, environmental issues and media compatibility.

Functional Description

The key to Versa's full flow is the internal design and the Versa "shuttle." This combination provides a larger surface area and yields much higher flows than controls utilizing ball checks. When the flow is reversed, placing pressure on the "shuttle" it rapidly opens to a high flow orifice that instantly empties the volume in the line.

Flow adjustment is controlled by Versa's proven needle design from our "Bleed Control" family of products. Versa's needles are designed for full adjustability throughout the control range.

The unique internal design provides an exceptional linear flow curve, each % of needle turn provides an equivalent % of flow change. No dead zones. A needle locknut is offered as standard for tamper proof adjustments.

Mounting

The FCV may be mounted in line with piping or by utilizing the mounting holes provided and in any orientation.

Size	Part Number	Cv	
		Un-controlled direction	Controlled direction
1/4"	FCV-3-316	2.0	0* to 2.0
1/2"	FCV-5-316	5.0	0* to 5.0
1"	FCV-7-316	13.6	0* to 9.4

* Not bubble tight at shut off for safety reasons

Valve	Dimensions										
	A	B	C	D	E	F	G	H	I	J	Mounting Hole Ø
1/4"	0.50 (12.7)	0.66 (16.8)	0.53 (13.5)	0.66 (16.8)	3.23 (82.0)	1.4 (35.6)	0.60 (15.2)	2.50 (63.5)	0.87 (22.1)	1.0 (25.4)	.22 (5.6)
1/2"	0.58 (14.7)	0.74 (18.8)	0.98 (24.9)	0.74 (18.8)	4.1 (104.1)	1.9 (48.3)	0.78 (19.9)	3.35 (85.2)	0.1 (2.54)	1.25 (31.8)	.22 (5.6)
1"	.97 (24.8)	1.25 (31.8)	1.50 (38.1)	1.25 (31.8)	6.21 (157.7)	2.62 (66.5)	1.50 (38.1)	5.0 (127)	1.69 (42.9)	1.66 (42.2)	.265 (6.7)

Materials

Body: 316L Stainless Steel
Seals: Fluorocarbon (standard)
Nitrile (suffix: -44)

Spring: Inconel
NACE compliant materials

Temperature

-5° F to 200°F (-20°C to 93°C)
-55° F to 200°F (-48°C to 93°C) w/ option -44

Pressure

Max: 400 psi. (27.6 BAR)

Port Size

Inlet: 1/4", 1/2" or 1" NPT
Outlet: 1/4", 1/2" or 1" NPT

Weight

1/4" 0.75 lbs. (0.34 kg.)
1/2" 1.15 lbs. (0.52 kg.)
1" 3.45 lbs. (1.57)