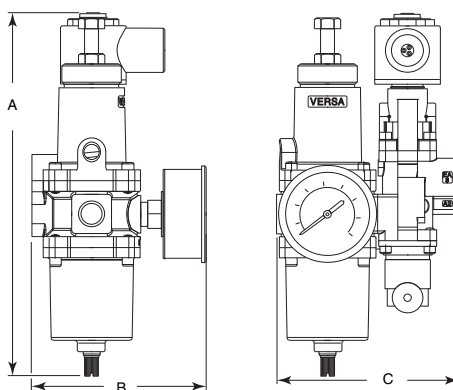


# THE C-316 SERIES

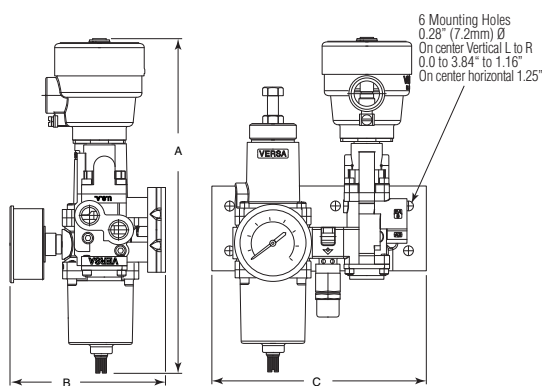
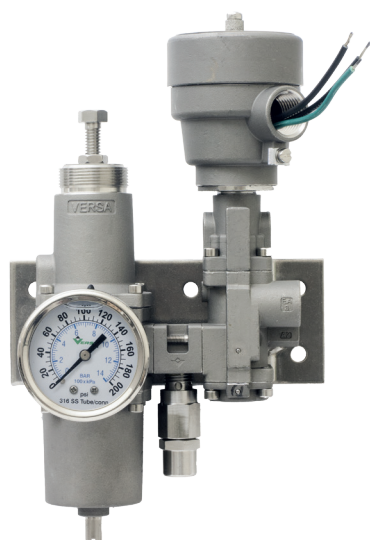
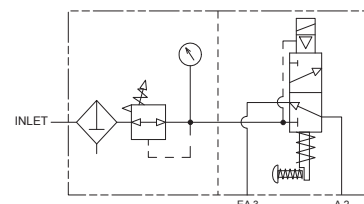
## CMAP Modular Air Package



	A	B	C
Inches	8.44	3.85	4.0
mm	214	97.9	101.6

### Bill of Materials

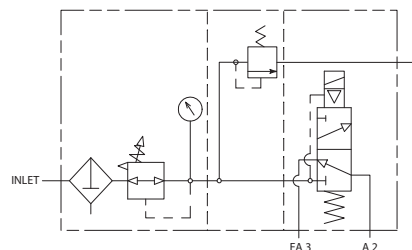
Description	Part Number
Regulator	ARFA-3111-316-CA3-GBG
Valve	CAG-3321-316-356BN-CA3-XX-A120



	A	B	C
Inches	9.39	3.85	6.0
mm	238	97.9	152.4

### Bill of Materials

Description	Part Number
Regulator	ARFA-3111-316-CA3-GBG
Valve	CSG-3321-316-CA3-XDBS1-A120
Spacer	CY-3209-32-316-CA3
Bracket	4302-99-316-CA3
Relief Valve	RV-3-316-100



### Air Prep Selection

Regulator, Filter and manual drain*	Description	Part Number		Weights	
		0-100 psi	0-150 psi	lbs	kg
	No gauge	ARFA-3112-316-CA3	ARFA-3111-316-CA3	2.7	1.22
	2" gauge liquid filled	ARFA-3112-316-CA3-GBG	ARFA-3111-316-CA3-GBG	2.9	1.32
	2 1/2" gauge liquid filled	ARFA-3112-316-CA3-GAG	ARFA-3111-316-CA3-GAG	2.9	1.32

### Valve Selection

Description	Part Number		Weights ††	
	3-way, normally closed †	3-way, normally open †	lbs	Kg
3/2 Pilot, Spring Return	CSG-3321-316-CA3-**	CGS-3322-316-CA3-**	1.9	0.86
3/2 Double Pilot, detented	CGG-3321-316-CA3-**	CGG-3322-316-CA3-**	2.5	1.13
3/2 Pilot, spring return w/ latch	CAG-3321-316-CA3-356BN-**	CGA-3322-316-CA3-356BN-**	2.2	0.99
3/2 Pilot, spring return w/ latch and button	CAG-3321-316-CA3-356B-**	CGA-3322-316-CA3-356B-**	2.3	1.04
3/2 Pilot, spring return	CSP-3301-316-CA3	CPS-3302-316-CA3	1.3	0.59

### Accessories

Description	Part Number	Weights	
		lbs	kg
Mounting bracket	Add 4302-99-316-CA3 to bill of Material	0.5	0.23
Auxiliary port plate	Add CY-3209-32-316-CA3 to bill of Material	0.2	0.09
Relief Valve (also specify Aux port plate)	Add RV-3-316-*** to bill of Material	0.2	0.09
Speed Control, close only	Add suffix -BC3 to Control Valve p/n	0.1	0.05
Speed Control, both open closed	Add FCV-3-316 to bill of Material	0.5	0.23

### Notes:

- \* For regulator auto drain, consult factory
- \*\* Add voltage and Pilot options. See page 18
- † For expilot change 3321 to 3301
- †† Weight are for -XX type Pilots
- \*\*\* Add set pressure, for example RV-3-316-080 for 80 psi