

HL Series Heatless Regenerative Compressed Air Dryers

Extremely dry compressed air for 200 –3000 SCFM

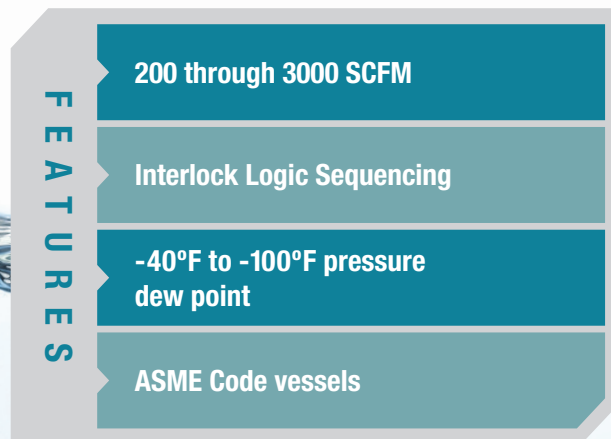
When reliable, high purity compressed air is essential, turn to HL series heatless compressed air dryers from Van Air Systems. HL series dryers have been engineered to deliver instrument quality, -40°F pressure dew point compressed air with unparalleled dependability.

At the heart of every HL series dryer is a patented Interlock Logic 3-way inlet transfer valve. Tested to more than 1 million cycles, every movement of the valve is pneumatically interlocked, guaranteeing precise tower sequencing every time. The interlocked valve sequencing protects your compressed air system from premature loss of flow or pressure – each phase of the drying cycle must be completed before the next can begin. This ensures uninterrupted air flow at constant pressure for your downstream equipment.

Every HL series dryer sized for 200 – 2500 SCFM comes standard with the robust solid state Touchpad Controller. The Touchpad Controller includes a cycle hold feature for preserving purge air when the compressor unloads. HL-3000 dryers and larger come standard with the Cycle Saver dew point demand switching controller, which reduces unnecessary purging under low flow and low moisture load conditions. The Cycle Saver and more advanced EMCON II energy saving controllers are also available as options on models HL-200 through HL-2500.

HL series dryers are ideal for:

- Pharmaceutical
- Manufacturing
- Refining and petrochemical
- Power generation
- Process industries



BENEFITS OF THE HL SERIES

Reliable // Simple // Long service life

vanairsystems.com

STANDARD EQUIPMENT

- -40°F pressure dew point
- Permanently lubricated inlet valve
- Valve position indicator
- Activated alumina desiccant
- Power on switch/LED
- Control power fuse
- Enamel exterior finish
- ASME Code vessels with:
 - Lifting lugs
 - Fill and drain ports
 - Removable stainless steel desiccant screens

- Purge exhaust mufflers
- Control air filter
- Panel mounted tower pressure gauges
- Panel mounted visual moisture indicator
- Tower status LEDs
- Tower drying/regenerating LEDs
- Dual purge valves
- 115/1/50-60 supply power
- Solid state
- NEMA 4X control enclosure
- Failure to switch alarm and contact
- Cycle hold feature

OPTIONAL EQUIPMENT

- 220/1/50-60 supply power
- Molecular sieve desiccant
- Hazardous area classification
- Mounted pre & after filters with bypass piping
- Digital dew point readout
- Energy saving controls (Cycle-Saver, Emcon II - standard on HL3000 and larger)

DIMENSIONS & SPECIFICATIONS

Model No.	A		B		C		In/Out Conn.	Weight		Desiccant Weight Per Tower	
	in	cm	in	cm	in	cm		lbs	kg	lbs	kg
HL-200	88 1/8	224	37 1/2	95	26 1/4	67	1 1/2" FLG	660	299	106	48
HL-250	88 1/8	224	37 1/2	95	26 1/4	67	1 1/2" FLG	715	324	130	59
HL-375	88 3/8	224	43 1/4	110	32	81	1 1/2" FLG	1035	469	203	92
HL-500	88 3/8	224	43 1/4	110	32	81	1 1/2" FLG	1160	525	266	120
HL-650	103 1/4	262	53 3/4	137	49 1/4	125	2 1/2" FLG	1680	761	366	166
HL-800	103 1/4	262	53 3/4	137	49 1/4	125	2 1/2" FLG	1830	829	440	199
HL-1000	109	277	65 3/4	167	50	127	2 1/2" FLG	2635	1194	560	254
HL-1250	109	277	65 3/4	167	50	127	2 1/2" FLG	2885	1307	678	307
HL-1500	121	307	83 3/4	213	72	183	3" FLG	3870	1753	872	395
HL-1750	121	307	83 3/4	213	72	183	3" FLG	4095	1855	986	447
HL-2000	121	307	83 3/4	213	72	183	3" FLG	4370	1980	1119	507
HL-2500	87	221	109 1/2	278	72	183	4" FLG	5800	2627	1450	657
HL-3000	97	246	92 3/4	236	84	213	4" FLG	6500	2945	1705	772

Due to our policy of continuous improvement, dimensions and specifications may change without notice. Request certified drawing for pre-piping.

MAXIMUM CAPACITIES SCFM / Nm3hr for -40°F PDP

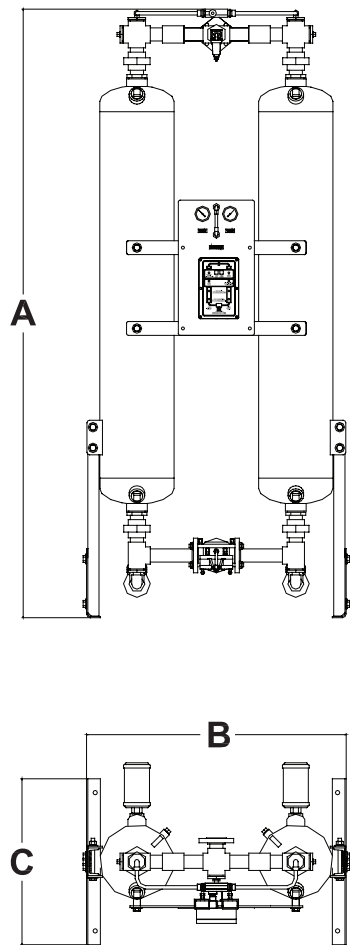
Model No.	60 PSIG 4.1 BARG		80 PSIG 5.2 BARG		100 PSIG 6.9 BARG		110 PSIG 7.59 BARG		125 PSIG 8.6 BARG		140 PSIG 9.7 BARG		150 PSIG 10.3 BARG	
	SCFM	Nm3hr	SCFM	Nm3hr	SCFM	Nm3hr	SCFM	Nm3hr	SCFM	Nm3hr	SCFM	Nm3hr	SCFM	Nm3hr
HL-200	130	209	165	265	200	322	209	336	221	355	232	373	240	386
HL-250	163	262	206	331	250	402	261	420	276	444	290	466	300	482
HL-375	244	392	310	498	375	603	391	629	414	666	436	701	449	722
HL-500	326	524	413	664	500	804	521	838	552	888	581	934	599	963
HL-650	423	680	537	863	650	1045	678	1090	717	1153	755	1214	779	1253
HL-800	521	838	661	1063	800	1286	834	1341	883	1420	929	1494	959	1542
HL-1000	651	1047	826	1328	1000	1608	1043	1677	1104	1775	1161	1867	1198	1926
HL-1250	814	1309	1032	1659	1250	2010	1303	2095	1380	2219	1452	2335	1498	2409
HL-1500	977	1571	1238	1991	1500	2412	1564	2515	1655	2661	1742	2801	1797	2890
HL-1750	1140	1833	1445	2324	1750	2814	1825	2935	1931	3105	2032	3267	2097	3372
HL-2000	1303	2095	1651	2655	2000	3216	2085	3353	2207	3549	2323	3735	2397	3854
HL-2500	1628	2618	2064	3319	2500	4020	2607	4192	2759	4436	2903	4668	2996	4818
HL-3000	1954	3142	2477	3983	3000	4824	3128	5030	3311	5324	3484	5602	3595	5781

Maximum capacities are based on 100°F and 100% RH.

Correction factors: Multiply maximum capacity by .9 for 110°F, .8 for 120°F, .8 for -100° pressure dew point (4 minute NEMA cycle).

RECOMMENDED ACCESSORIES

- AC Series inlet trim cooler
- F200 or F101 Series pre- and after- filters
- Dew point meter
- Safety relief valves



2950 Mechanic Street, Lake City, PA 16423, USA | Toll Free Phone 800-840-9906 | Corporate Fax 814-774-0778 | Order Entry Fax 814-774-3482

Distributed By:



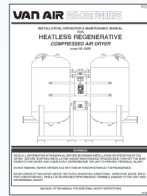
HL Series - PDF Downloads

Installation, Operation and Maintenance Manuals

HL-200 through HL-2000



HL-2500

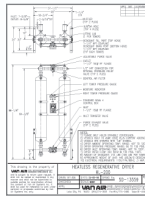


HL-300 through HL-5000

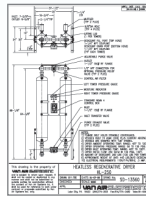


Sales Drawings

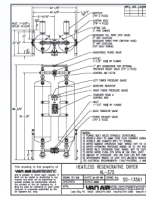
HL-200



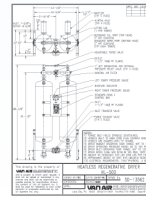
HL-250



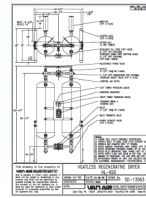
HL-375



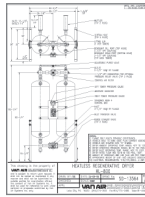
HL-500



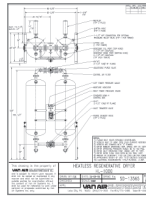
HL-650



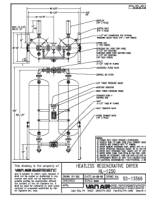
HL-800



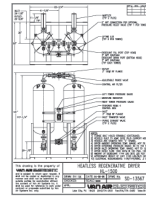
HL-1000



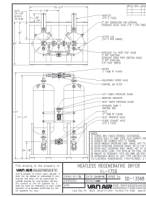
HL-1250



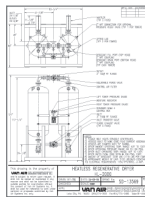
HL-1500



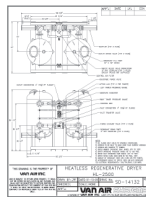
HL-1750



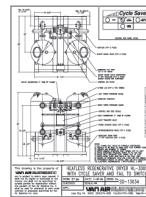
HL-2000



HL-2500



HL-3000



HL-4000



HL-5000



Technical Specifications

HL Series Technical Specifications

