

---

## FHP Series Stainless Steel High Pressure Air & Gas Filters

---

### Dependability under pressure.

When the pressure is on, depend on Van Air Systems FHP High Pressure Filters for effective oil aerosol, water and particulate removal from your compressed air or gas system.

FHP Series filters are designed for ease and built to provide lasting service for your air and gas system. Three model ranges handle pressures of up to 725, 1450 and 5000 PSIG. There are no flange or housing bolts to increase costly maintenance time and money as threaded housings facilitate element change out. Strong element cores maintain element integrity at maximum pressures. High quality, 316 polished stainless steel housings provide corrosion resistance and housing strength.

### FHP Series high pressure filters are ideal for:

- PET molding
- Refineries
- CNG fuelling
- Natural gas transmission
- Laboratories and test facilities



**F  
E  
A  
T  
U  
R  
E  
S**

**316 polished stainless steel**

**Three model ranges for 725, 1450, & 5000 PSIG maximum working pressure**

**High strength stainless steel element cores**

**Threaded housings facilitate rapid element change**

---

### BENEFITS OF THE FHP SERIES

---

Dependable // Easy to use // Cost saving

[vanairsystems.com](http://vanairsystems.com)

## STANDARD EQUIPMENT

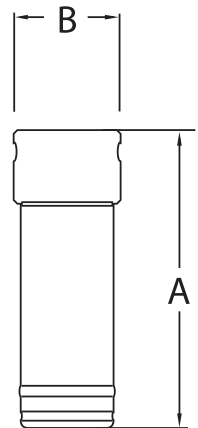
- NPT connections
- Threaded drain plug
- Buna-N body O-ring

## DIMENSIONS & SPECIFICATIONS

| Model No.         | A      |    | B     |    | Max Working Pressure |      | Flow @ Max Pressure |        | In/Out Conn. | Weight |    | Replacement Element Model No. |
|-------------------|--------|----|-------|----|----------------------|------|---------------------|--------|--------------|--------|----|-------------------------------|
|                   | in     | cm | in    | cm | PSIG                 | BARG | SCFM                | NM3/Hr |              | lbs    | kg |                               |
| FHP-20-7.25-(* )  | 6 3/4  | 18 | 3 3/8 | 9  | 725                  | 50   | 60                  | 96     | 1/4" NPT     | 4      | 2  | E100-15-(* )                  |
| FHP-40-7.25-(* )  | 8 1/8  | 21 | 3 3/8 | 9  | 725                  | 50   | 120                 | 193    | 3/8" NPT     | 4.5    | 2  | E100-30                       |
| FHP-70-7.25-(* )  | 10 1/8 | 26 | 3 3/8 | 9  | 725                  | 50   | 200                 | 322    | 1/2" NPT     | 5      | 3  | E100-50-(* )                  |
| FHP-105-7.25-(* ) | 10 5/8 | 26 | 4 3/8 | 12 | 725                  | 50   | 300                 | 482    | 3/4" NPT     | 9      | 4  | E100-105-(* )                 |
| FHP-200-7.25-(* ) | 16 5/8 | 43 | 4 3/8 | 12 | 725                  | 50   | 600                 | 965    | 1" NPT       | 11     | 5  | E100-200-(* )                 |
| FHP-325-7.25-(* ) | 20 3/4 | 53 | 6     | 16 | 725                  | 50   | 1000                | 1608   | 1 1/2" NPT   | 33     | 15 | E100-325/400-(* )             |
| FHP-400-7.25-(* ) | 20 3/4 | 53 | 6     | 16 | 725                  | 50   | 1200                | 1930   | 2" NPT       | 33     | 15 | E100-325/400-(* )             |
| FHP-670-7.25-(* ) | 32 1/2 | 83 | 6     | 16 | 725                  | 50   | 2000                | 3216   | 2" NPT       | 46     | 21 | E101/102-500-(* )             |
| FHP-20-14.5-(* )  | 5 3/8  | 14 | 2 5/8 | 7  | 1450                 | 100  | 60                  | 96     | 1/4" NPT     | 4.5    | 2  | EHP-15/20-(* )                |
| FHP-50-14.5-(* )  | 9 7/8  | 25 | 2 5/8 | 7  | 1450                 | 100  | 185                 | 297    | 1/2" NPT     | 6      | 3  | EHP-50-(* )                   |
| FHP-75-14.5-(* )  | 10 7/8 | 28 | 3 1/2 | 9  | 1450                 | 100  | 270                 | 434    | 3/4" NPT     | 13.5   | 7  | EHP-70/75-(* )                |
| FHP-110-14.5-(* ) | 10 1/2 | 27 | 5 1/4 | 14 | 1450                 | 100  | 400                 | 643    | 1" NPT       | 23     | 11 | EHP-100/110-(* )              |
| FHP-195-14.5-(* ) | 19     | 48 | 5 1/4 | 14 | 1450                 | 100  | 700                 | 1126   | 1" NPT       | 32.5   | 15 | EHP-175/195-(* )              |
| FHP-275-14.5-(* ) | 20 3/4 | 53 | 6     | 16 | 1450                 | 100  | 1000                | 1608   | 1 1/2" NPT   | 48.5   | 22 | EHP-275-(* )                  |
| FHP-550-14.5-(* ) | 32 1/2 | 83 | 6     | 16 | 1450                 | 100  | 2000                | 3216   | 2" NPT       | 62     | 29 | EHP-550-(* )                  |
| FHP-6-50-(* )     | 4 1/8  | 11 | 1 5/8 | 5  | 5000                 | 345  | 28                  | 45     | 1/4" NPT     | 1.5    | 1  | EHP-6-(* )                    |
| FHP-15-50-(* )    | 5 3/8  | 14 | 2 5/8 | 7  | 5000                 | 345  | 67                  | 108    | 1/4" NPT     | 4.5    | 2  | EHP-15/20-(* )                |
| FHP-35-50-(* )    | 8 1/4  | 21 | 3 1/2 | 9  | 5000                 | 345  | 150                 | 241    | 1/2" NPT     | 12.5   | 6  | EHP-35-(* )                   |
| FHP-70-50-(* )    | 11 1/8 | 29 | 3 1/2 | 9  | 5000                 | 345  | 300                 | 482    | 3/4" NPT     | 13.5   | 7  | EHP-70/75-(* )                |
| FHP-100-50-(* )   | 14 7/8 | 38 | 5 1/2 | 14 | 5000                 | 345  | 445                 | 716    | 1" NPT       | 32     | 15 | EHP-100/110-(* )              |
| FHP-175-50-(* )   | 20 3/4 | 53 | 5 1/2 | 14 | 5000                 | 345  | 775                 | 1246   | 1" NPT       | 38.5   | 18 | EHP-175/195-(* )              |

## FILTRATION GRADES

| Model No.           | Element Grade | Purpose                      | Particulate                         | Max Oil                               | Max Inlet  | Clean, Dry Pressure |             |
|---------------------|---------------|------------------------------|-------------------------------------|---------------------------------------|------------|---------------------|-------------|
|                     |               |                              | Nominal<br>Removal/ISO 8573.1 Class | Carryover PPM<br>w/w/ISO 8573.1 Class | Temp<br>°F | Dry Δ P             | Oil Wet Δ P |
| Oil Removal         | AA            | Extra coarse coalescing      | 25μ/5                               | 7.8/5                                 | 225        | 0.4                 | 0.7         |
|                     | A             | Coarse coalescing            | 5μ/3                                | 3.9/4                                 | 225        | 0.6                 | 1.1         |
|                     | B             | General purpose coalescing   | 1μ/2                                | .78/3                                 | 175        | 1.1                 | 2.2         |
|                     | C             | Highly efficiency coalescing | .01μ/1                              | .008/1                                | 125        | 1.5                 | 4.4         |
| Particulate Removal | RAA           | Extra coarse particulate     | 25μ/5                               | -                                     | 225        | 0.4                 | NA          |
|                     | RA            | Coarse particulate           | 5μ/3                                | -                                     | 225        | 0.6                 | NA          |
|                     | RB            | General purpose particulate  | 1μ/1                                | -                                     | 225        | 1.1                 | NA          |
|                     | RC            | High efficiency particulate  | .01μ/1                              | -                                     | 225        | 1.5                 | NA          |
| Oil Vapor Removal   | RD            | Vapor absorbing              | .01μ/1                              | .004/1                                | 80         | 1.1                 | NA          |



## CORRECTION FACTORS

| Operating Pressure                 | 200 PSIG         | 300 PSIG         | 400 PSIG         | 500 PSIG         | 600 PSIG         | 725 PSIG         |                 |
|------------------------------------|------------------|------------------|------------------|------------------|------------------|------------------|-----------------|
| <b>725 PSIG (50 BARG) Series</b>   | <b>13.8 BARG</b> | <b>20.7 BARG</b> | <b>20.7 BARG</b> | <b>27.6 BARG</b> | <b>34.5 BARG</b> | <b>41.4 BARG</b> |                 |
| Correction Factor                  | 0.54             | 0.65             | 0.75             | 0.83             | 0.91             | 1.00             |                 |
| Operating Pressure                 | 725 PSIG         | 800 PSIG         | 900 PSIG         | 1000 PSIG        | 1250 PSIG        | 1450 PSIG        |                 |
| <b>1450 PSIG (100 BARG) Series</b> | <b>50 BARG</b>   | <b>55.2 BARG</b> | <b>62.1 BARG</b> | <b>69 BARG</b>   | <b>70.7 BARG</b> | <b>100 BARG</b>  |                 |
| Correction Factor                  | 0.71             | 0.75             | 0.79             | 0.83             | 0.93             | 1.00             |                 |
| Operating Pressure                 | 2000 PSIG        | 2500 PSIG        | 3000 PSIG        | 3500 PSIG        | 4000 PSIG        | 4500 PSIG        | 5000 PSIG       |
| <b>5000 PSIG (345 BARG) Series</b> | <b>13.8 BARG</b> | <b>20.7 BARG</b> | <b>20.7 BARG</b> | <b>27.6 BARG</b> | <b>34.5 BARG</b> | <b>41.4 BARG</b> | <b>345 BARG</b> |
| Correction Factor                  | 0.63             | 0.71             | 0.78             | 0.84             | 0.90             | 0.95             | 1.00            |

## FILTER SIZING

1. Determine the maximum flow rate and the operating pressure at the point where the filter will be installed.
2. Identify the correction factor that most closely corresponds to the operating pressure.
3. Multiply the appropriate correction factor by the value shown in the column "Flow @ Max Pressure". This gives the flow capacity of the filter at the actual operating pressure.

**Note:** operating pressure cannot exceed the maximum working pressure.

Consult the factory for verification of filter selection.

2950 Mechanic Street, Lake City, PA 16423, USA | Toll Free Phone 800-840-9906 | Corporate Fax 814-774-0778 | Order Entry Fax 814-774-3482

Distributed By:

**VAN AIR SYSTEMS**  
  
[vanairsystems.com](http://vanairsystems.com)

---

## FHP Series - PDF Downloads

---

### Installation, Operation and Maintenance Manuals

---

FHP Series



### Sales Drawings

---

FHP Series

