

Direct Pilot Operated

STAINLESS STEEL

Normally Closed

Air, Oil, Water or Vacuum*

These direct pilot operated valves can be used with a variety of media where quick positive control is required from a low pilot signal.

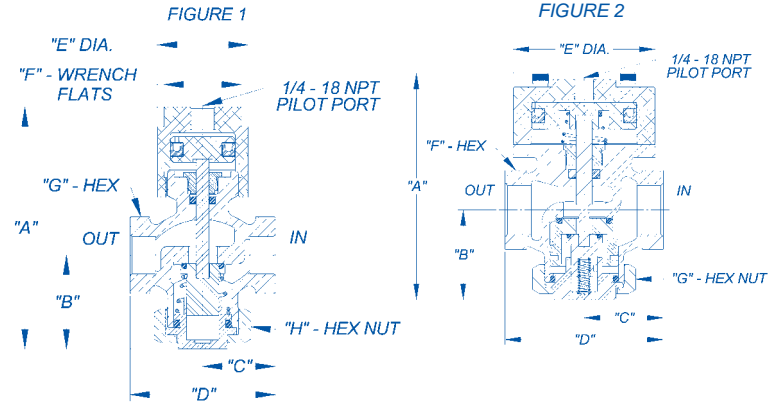
Designed for pressure applications with highly corrosive or ultra-pure liquid systems these direct pilot operated valves can be used where quick positive control is required. The valve is ideal for a broad range of industrial applications, from electronics to petro-chemical plants, commercial laundries, car wash operations, etc.

Valves feature a large resilient poppet that provides bubble-tight closure, even under low pressure conditions. Bottom hex nut is easily removed for quick access to valve's poppet assembly. U-Cup seal on operating stem and U-cup pilot piston seal prevent controlled media from entering pilot chamber, permitting use of different media for pilot control.



Specifications

Body:	Stainless Steel (304)
Pilot Cap:	Brass/Nickel Plated
Internal Parts:	Stainless Steel
Seals:	Viton- A
Temperature Range:	-30° F to +300°
Pressure Rating:	0-500 PSI * Vacuum (use -31 suffix)
Pilot Ratio:	See Model Number Chart



Model Numbers

NPT Pipe Size (Inches)	CV Factor	Pilot Ratio*	Wgt. (Lbs.)	Model No.
3/4	5.32	2:1	4.0	337412
	5.32	6:1		338512
1	10.2	4:1	6.0	337416
	8.06	10:1		338516

*Internal Line Pressure vs. Minimum Pilot Pressure.

Dimension (inches)

Pipe Size	3/4"
A	5.28
B	1.97
C	1.62
D	3.25
E	2.00
F	1.62
G	1.50
H	1.88

Figure 1

Dimension (inches)

Pipe Size	1"
A	5.62
B	2.12
C	1.88
D	3.75
E	3.38
F	1.88
G	2.12

Figure 2