

Direct Cam Operated

Normally Closed

Air, Oil, Water or Vacuum*

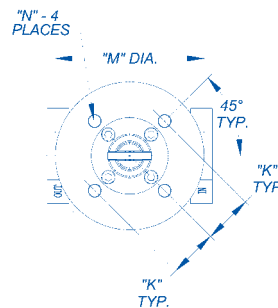
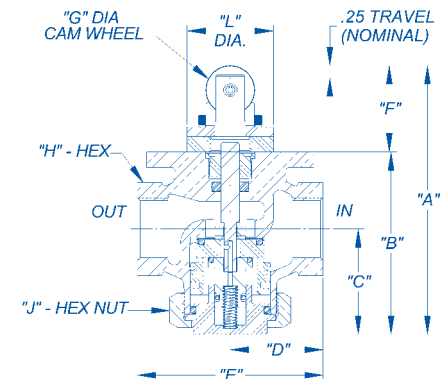
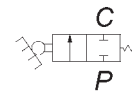
These Direct operated cam valves can be used with a variety of media where quick, positive control is required. With optional seals, they require no lubrication, making them ideal for non-lube air service.

Valves feature a large, resilient poppet that provides bubble-tight closure, even under low pressure conditions. Bronze, brass and stainless steel construction and choice of seal materials provide excellent compatibility with a wide range of media.

For easy service or repair, removal of bottom hex nut from body give quick access to valve's poppet assembly—without the need for disconnecting piping. Three-quarter inch and larger sizes incorporate dual poppet construction to minimize operating force required and to permit rapid valve response with even viscous media.



ANSI SYMBOL



Specifications

Body:	Cast Bronze (ASTM B-61)
Internal Parts:	Brass, Bronze and Stainless Steel
Seals:	Buna-N Standard (Optional Seals pg. 15)
Temperature Range:	-30° F to +225° F with Standard Seals (300° F with optional Viton)
Pressure Rating:	0-500 PSI *Vacuum (use -31 suffix)

Model Numbers

NPT Pipe Size (Inches)	CV Factor	Wgt. (Lbs.)	Model No.
1/4	1.9	3.00	321704
3/8	3.8	3.00	321706
1/2	4.0	3.00	321708
3/4	3.87	3.75	321712
1	8.06	5.25	321716
1 1/4	17.10	8.00	321720
1 1/2	23.60	10.5	334824
2	38.00	18.5	324832

Dimension (inches)

Pipe Size	1/4" to 1/2"	3/4"	1"	1 1/4"	1 1/2"	2"
A	5.16 max 5.14 min	5.42 max 5.37 min	5.44 max 5.37 min	7.29 max 7.21 min	7.69 max 7.65 min	9.07 max 8.96 min
B	3.41	3.67	3.69	4.78	5.19	6.56
C	1.78	1.97	2.13	2.83	3.11	4.09
D	1.38	1.62	1.88	2.19	2.44	2.90
E	2.75	3.25	3.75	4.38	4.88	5.80
F	1.75 max 1.73 min	1.75 max 1.70 min	1.75 max 1.68 min	2.51 max 2.43 min	2.51 max 2.47 min	2.51 max 2.40 min
G	1.00	1.00	1.00	1.25	1.25	1.25
H	1.25	1.50	1.88	2.25	2.50	3.25
J	1.62	1.88	2.12	2.75	3.00	4.00
K	1.12	1.12	1.12	1.47	1.47	1.47
L	1.75	1.75	1.75	2.12	2.12	2.12
M	3.38	3.38	3.38	3.38	3.50	3.50
N	.28 Dia.Thru	.28 Dia.Thru	.28 Dia.Thru	.28 Dia.Thru	1/4-20 UNC-2B x .41 DP.	1/4-20 UNC-2B x .41 DP.