

Cylinder accessories → Shock absorbers

SA2 series

Brochure



Cylinder accessories → Shock absorbers

SA2 series

Industrial shock absorber, Series SA2-MS
▶ for MSC ▶ cushioning: self-compensating ▶ sealing for piston rod: Lip ring ▶ Mounting
thread: M6x0,5 - M14x1,5 ▶ Max. energy absorption/stroke: 1 - 30 Nm

3

Industrial shock absorber, Series SA2-RC
▶ for RCM ▶ cushioning: self-compensating ▶ sealing for piston rod: Lip ring ▶ Mounting
thread: M8x1 - M14x1,5 ▶ Max. energy absorption/stroke: 4 - 20 Nm

4

Cylinder accessories → Shock absorbers

Industrial shock absorber, Series SA2-MS

► for MSC ► cushioning: self-compensating ► sealing for piston rod: Lip ring ► Mounting thread: M6x0,5 - M14x1,5 ► Max. energy absorption/stroke: 1 - 30 Nm



00127420

Ambient temperature min./max. -20 °C / +80 °C
 Medium Oil
 Mounting Lock nut

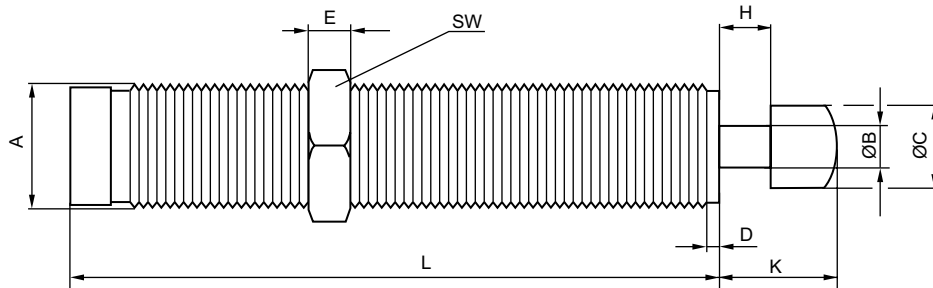
Materials:
 Cylinder tube Steel, bronzed
 Piston rod Stainless steel, hardened
 Lock nut Steel, bronzed
 Stop Polyoxymethylene

The delivered product varies from that in the illustration. See the drawing for an exact description.

	Type	Stroke	Effective mass	Return spring	Max. energy ab-	Max. energy ab-	Part No.
		[mm]	me min./max.	force min./max.	sorption/stroke	sorption/hour	
			[kg]	[N]	[Nm]	[Nm/h]	
	SA2-MS	5	0.8 / 2.8	2 / 5	1	3000	R412010459
		6	3.5 / 10	2 / 5	3	14100	R402000758
		10	10 / 28	4 / 10	8	26000	R402000759
		14	3 / 26	13 / 23	30	50000	R402000760

Part No.	Mounting thread	for	Weight	Delivery unit
			[kg]	
R412010459	M6x0,5	MSC	0.003	1
R402000758	M8x1		0.015	
R402000759	M12x1		0.035	
R402000760	M14x1,5		0.05	

Dimensions



00132057

H = stroke
 A = mounting thread

Part No.	Type	Mounting thread	ØB	ØC	D	E	H	K	L	SW
R412010459	SA2-MS	M6x0,5	2	5	2	3	5	10	27	8
R402000758	SA2-MS	M8x1	2.5	6	2.5	3	6	12	41	11
R402000759	SA2-MS	M12x1	4	10	2.5	4	10	18	52	14
R402000760	SA2-MS	M14x1,5	4	10	2.5	5	14	21.5	78.5	17

Cylinder accessories → Shock absorbers

Industrial shock absorber, Series SA2-RC

► for RCM ► cushioning: self-compensating ► sealing for piston rod: Lip ring ► Mounting thread: M8x1 - M14x1,5
 ► Max. energy absorption/stroke: 4 - 20 Nm



00135329

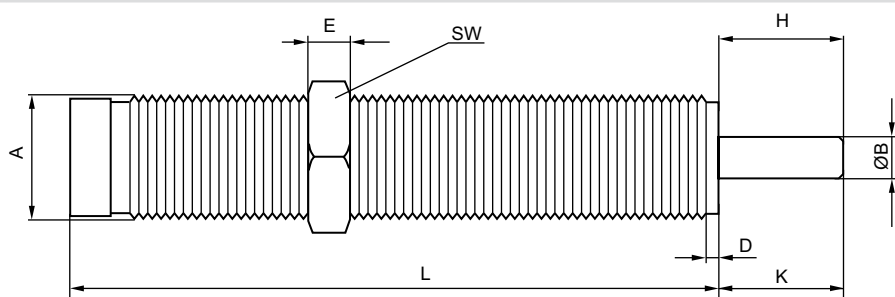
Ambient temperature min./max. +0°C / +60°C
 Medium Oil
 Mounting Lock nut

Materials:
 Cylinder tube Steel, bronzed
 Piston rod Stainless steel, hardened
 Lock nut Steel, bronzed

	Type	Stroke	Effective mass	Return spring	Max. energy ab-	Max. energy ab-	Part No.
		[mm]	me min./max. [kg]	force min./max. [N]	sorption/stroke [Nm]	sorption/hour [Nm/h]	
	SA2-RC	6	2.8 / 70	2.5 / 6	4	14400	R412004751
		6	6 / 280	3.5 / 8	9	21000	R412004752
		8.5	17 / 510	3.5 / 7	16	30000	R412004753
		9.5	100 / 420	23 / 35	20	40000	R412010089

Part No.	impact speed min./max. [m/s]	Mounting thread	for	Weight [kg]	Delivery unit
R412004751	-	M8x1	RCM	0.01	1
R412004752	-	M10x1		0.02	
R412004753	-- / 0.65	M12x1		0.035	
R412010089	-	M14x1,5		0.06	

Dimensions



00132056

H = stroke
 A = mounting thread

Part No.	Type	Mounting thread	ØB	D	E	H	K	L	SW
R412004751	SA2-RC	M8x1	2.5	2.5	3	9	9	44	11
R412004752	SA2-RC	M10x1	3	2.5	3	9	9	49.5	13
R412004753	SA2-RC	M12x1	4	2.5	4	11	11	65	14
R412010089	SA2-RC	M14x1,5	4	2.5	5	14	14	69	17

Bosch Rexroth AG
Pneumatics
Ulmer Straße 4
D - 30880 Laatzen
Phone +49 511 2136-0
Fax +49 511 2136-2 69
sales-pneumatics@boschrexroth.de
www.boschrexroth.com/pneumatics

Your contact:

Canada

Bosch Rexroth Canada Corp.
3426 Mainway Drive
Burlington, Ontario L7M 1A8
Tel. +1 905 335-5511
Fax +1 905 335-4184

Australia

Bosch Rexroth Pty. Ltd.
3 Valediction Road
Kings Park NSW 2148
Sydney
Tel. +61 2 9831-7788
Fax +61 2 9831-5553

U.S.A.

Bosch Rexroth Corp.
1953 Mercer Road
Lexington, KY 40511-1021
Kentucky
Tel. +1 859 254-8031
Fax +1 859 254-4188

Great Britain

Bosch Rexroth Ltd.
Broadway Lane
South Cerney
Cirencester, GL7 5UH
Gloucestershire
Tel. +44 1285 86-3000
Fax +44 1285 86-3003

further contacts:
www.boschrexroth.com/addresses

The data specified above only serve to describe the product. No statements concerning a certain condition or suitability for a certain application can be derived from our information. The information given does not release the user from the obligation of own judgment and verification. It must be remembered that our products are subject to a natural process of wear and aging.

© This document, as well as the data, specifications and other informations set forth in it, are the exclusive property of Bosch Rexroth AG. Without their consent it may not be reproduced or given to third parties.

Subject to modifications.

Online-PDF
23-10-2012