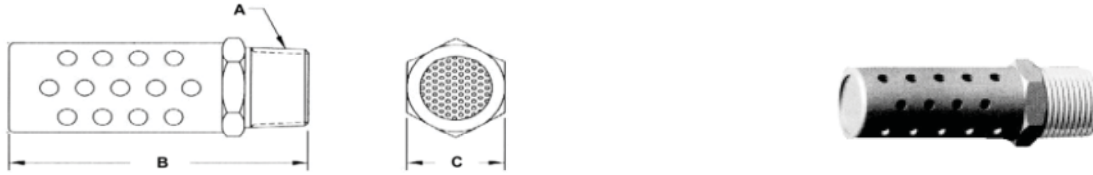


Accessory Devices - Silencers

Silencers, NPT threads
Metal construction



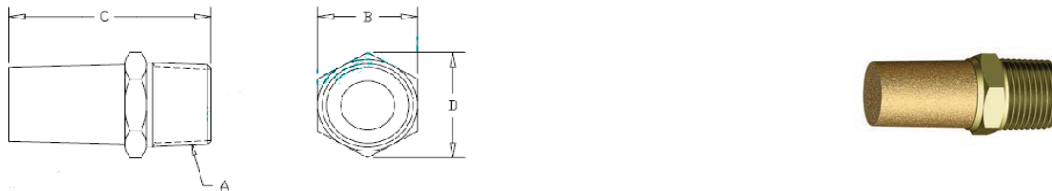
Canister-Style Silencer - NPT Threads



Recommended for pressures up to 125 PSI. Construction of brass and zinc-plated steel.

Part Number	A	B (in.)	C (in.)	Flow (SCFM) at 90 psi	Weight (oz.)
R432012062	1/8-27 NPT	1.38	0.43	44	0.02
R432012060	1/4-18 NPT	1.75	0.56	96	0.05
R432012058	3/8-18 NPT	2.10	0.68	200	0.08
R432011952	1/2-14 NPT	2.75	0.87	450	0.50
R432012059	3/4-14 NPT	3.15	1.06	560	0.30
R432012057	1-11 1/2 NPT	3.87	1.31	800	0.50
R432012061	1 1/4-11 1/2 NPT	4.50	1.68	1120	0.85

Sintered Bronze Cone Silencer - NPT Threads



Recommended for pressures up to 125 PSI. Construction brass and bronze. Porosity: 40 micron

Part Number	A	B (in.)	C (in.)	D (in.)
R432000825	1/8-27 NPT	7/16	0.89	0.50
R432000826	1/4-18 NPT	9/16	1.28	0.65
R432000827	3/8-18 NPT	11/16	1.52	0.81
R432000828	1/2-14 NPT	7/8	1.98	1.03
R432000829	3/4-14 NPT	1 1/16	2.28	1.25

Sintered Bronze Breather/Vent - NPT Threads



Recommended for pressures up to 125 PSI. Construction brass and bronze. Porosity: 90 micron

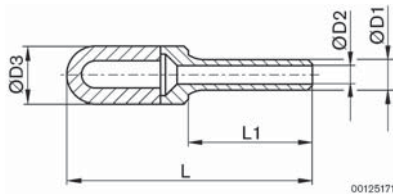
Part Number	A	B (in.)	C (in.)	D (in.)
R432000830	1/8-27 NPT	0.40	7/16	0.50
R432000831	1/4-18 NPT	0.68	9/16	0.65
R432000832	3/8-18 NPT	0.79	11/16	0.81
R432000833	1/2-14 NPT	0.97	7/8	1.03
R432000834	3/4-14 NPT	1.06	1 1/16	1.25

Accessory Devices - Silencers

Silencers, inch, push-in type
Polyethylene construction



Silencers, Inch push-in type, polyethylene



Part No.	Ø D1	Ø D2	Ø D3	L1	L	Flow SCFM
R412005727	1/4"	0.14	0.49	0.81	1.77	1.1*
R412005728	3/8"	0.26	0.61	1.04	2.26	2.3*
R412007714	1/2"	0.36	0.73	1.14	3.23	2.1**

All dimensions in inches.

*Minimum based on 0.73 psi backpressure.

**Minimum based on 0.36 psi backpressure.

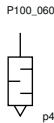
Accessory Devices - Silencers

Silencers, metric, Series SI1
Conical, sintered bronze

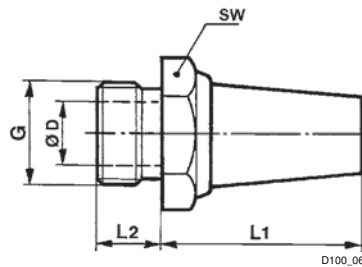


Working pressure min./max. 0 bar / 10 bar
Ambient temperature min./max. -25°C / +80°C
Medium Compressed air

Materials:
Silencers Sintered bronze
Thread Brass



Dimensions



Part No.	Port G	Sound pressure level [db(A)]	Qn [l/min]	SW	Ø D	L1	L2	Weight [kg]	Delivery quantity [Piece]
1827000006	M5	72	460	7	2.5	15	5	0.004	10
8140000700	M7	-	-	10	4	15	5	0.006	10
1827000000	G 1/8	75	1500	13	6	18	6	0.01	10
R412004817	G 1/4	-	-	16	8.5	18.7	7.6	0.013	10
1827000001	G 1/4	79	2900	17	8.5	25	8	0.02	10
1827000002	G 3/8	84	5900	22	12	34	10	0.05	5
1827000003	G 1/2	90	7100	27	14.5	44	12	0.08	2
1827000004	G 3/4	92	8800	32	19	66	14	0.13	1
1827000005	G 1	102	11100	41	25	66	16	0.18	1

Sound pressure level measured at 6 bar at 1 m distance

Accessory Devices - Silencers

Silencers, metric, Series SI1
Low profile, sintered bronze

Rexroth
Bosch Group



P100_037



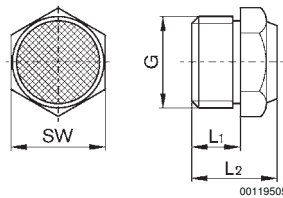
Working pressure min./max.
Ambient temperature min./max.
Medium

0 bar / 10 bar
-25°C / +80°C
Compressed air

Materials:
Silencers
Thread

Sintered bronze
Brass

Dimensions



00119505

Part No.	Port G	Sound pressure level [db(A)]	Qn [l/min]	L1	L2	SW	Weight [kg]	Delivery quantity [Piece]		
1827000032	M5	79	280	5	10.3	7	0.005	10		
1827000031	G 1/8	85	640	6	11.5	13	0.001	10		
1827000033	G 1/4	88	900	8	13.5	17	0.01	10		
1827000034	G 3/8	90	1750	10	17.5	22	0.016	5		
1827000035	G 1/2	85	2000	12	19.5	27	0.035	2		
8145003400	G 3/4	82	3400	14	22.5	32	0.095	1		
8145001000	G 1	82	5100	16	22.5	41	0.057	1		

Sound pressure level measured at 6 bar at 1 m distance

Accessory Devices - Silencers

Silencers, metric, Series SI1
Canister type, aluminum



00134016



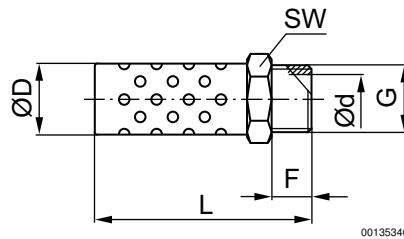
Working pressure min./max.
Ambient temperature min./max.
Medium

0 bar / 15 bar
-10°C / +150°C
Compressed air

Materials:
Silencers
Thread

Metal braiding
Aluminum

Dimensions



00135346

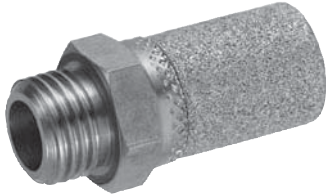
Part No.	Port G	Sound pressure level [db(A)]	Qn [l/min]	L	F	D	d	SW	Delivery quantity [Piece]
R412010283	G 1/8	94	520	33.5	6	10.4	6	11	10
R412010245	G 1/4	96	810	42.5	8.5	13.4	8.5	14	10
R412010246	G 3/8	98	1800	49.2	9	16.5	12	17	5
R412010247	G 1/2	100	3000	65.2	11	21.5	15	22	5
R412010248	G 3/4	102	5800	74.5	12	16.5	20	27	2
R412010249	G 1	104	8500	91	15.5	32.3	26	33	2

Sound pressure level measured at 6 bar at 1 m distance

Accessory Devices - Silencers

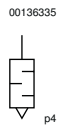
Silencers, metric, Series SI1
Stainless steel

Rexroth
Bosch Group

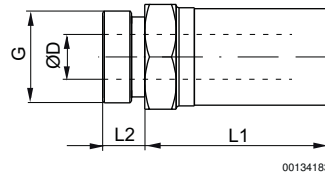


Working pressure min./max. 0 bar / 12 bar
Ambient temperature min./max. -20°C / +150°C
Medium Compressed air

Materials:
Silencers Stainless steel
Thread Stainless steel



Dimensions

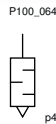


Part No.	Port G	Sound pressure level [db(A)]	Qn [l/min]	SW	Ø D	L1	L2	Weight [kg]	Delivery quantity [Piece]
R412010090	M5	85	125	8	3.1	10.5	3.5	0.003	1
R412010081	G 1/8	90	465	13	6.6	20	6	0.011	1
R412010082	G 1/4	93	850	16	8.6	29.5	7.5	0.021	1
R412010083	G 3/8	101	1300	19	12.1	33.5	7.5	0.028	1
R412010084	G 1/2	95	1915	24	15.3	39.5	9.5	0.048	1
R412010085	G 3/4	110	2415	30	19.3	45	10	0.076	1
R412010086	G 1	100	6000	36	25.5	49.5	11.5	0.099	1

Sound pressure level measured at 6 bar at 1 m distance

Accessory Devices - Silencers

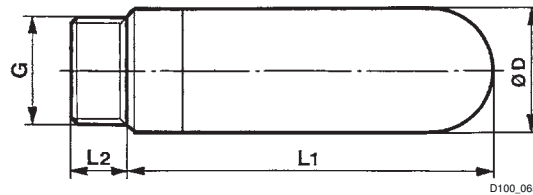
Silencers, metric, Series SI1
Polyethylene threaded and push-in



Working pressure min./max. 0 bar / 10 bar
Ambient temperature min./max. -25°C / +80°C
Medium Compressed air

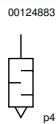
Materials:
Silencers Polyethylene
Thread Polyethylene

Dimensions



Part No.	Port G	Sound pressure level [db(A)]	Qn [l/min]	Ø D	L1	L2	Weight [kg]	Delivery quantity [Piece]
1827000018	M5	-	-	6.5	17.5	4	0.001	5
1827000019	G 1/8	78	1500	12.5	28.5	5.5	0.002	5
1827000020	G 1/4	80	3100	15.5	34.5	8	0.003	5
1827000021	G 3/8	85	5300	18.5	56	11.5	0.008	2
1827000022	G 1/2	88	7000	23.3	66.5	11	0.013	1
1827000023	G 3/4	-	-	38.5	115.5	16	0.04	1
1827000024	G 1	-	-	49	140	21	0.055	1

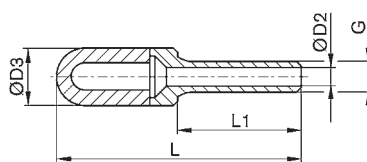
Sound pressure level measured at 6 bar at 1 m distance



Working pressure min./max. 0 bar / 10 bar
Ambient temperature min./max. -25°C / +80°C
Medium Compressed air

Materials:
Silencers Polyethylene
Thread Polyethylene

Dimensions



Part No.	Port G	Qn [l/min]	Ø D2	Ø D3	L1	L	Weight [kg]	Delivery quantity [Piece]
R412007519	Ø 4	15	2.5	7	16	32	0.002	5
R412007899	Ø 6	30	3.5	10	20.5	45	0.002	5
R412000591	Ø 6	30	3.5	12.5	20.5	45	-	5
R412007520	Ø 8	45	4.8	13.5	21.5	43.5	0.002	5
R412000593	Ø 10	70	6.9	15.5	26.5	57.5	0.004	5
R412007715	Ø 12	-	8.4	18.5	29	82	0.007	5