

Switch Mounting Arrangements

Overview of switching system

- 1 Switch
- 2 Switching cam
- 3 Cable duct (aluminum alloy, black anodized)
- 4 Socket head cap screw with washer

Notes for mounting

A mounting duct is required for installation of the switches.

 **Short stroke:**
Consider the length of the switch!

Mounting side:

Switches may be mounted on the left (L) or right (R) side of the module.

For two-carriage versions:

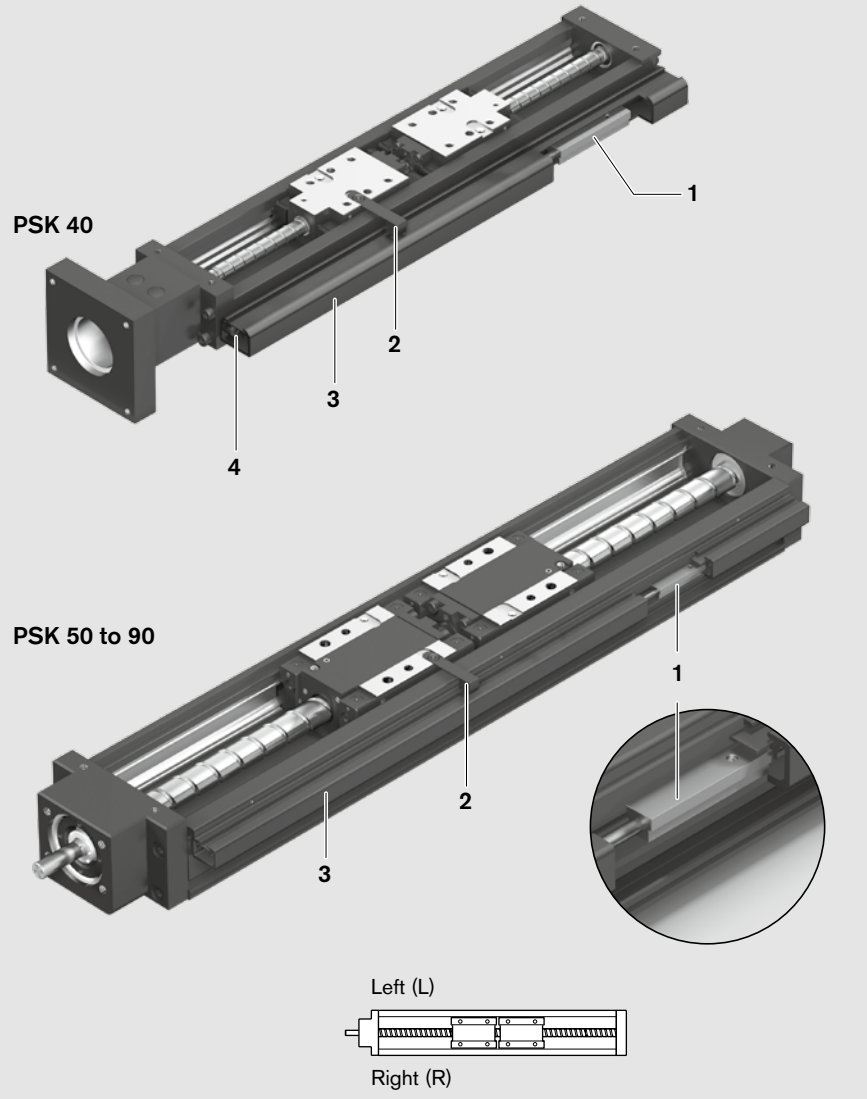
Switch actuation by the driving runner block (on the motor side).

Ordering the switches and accessories

Refer to the following table for part numbers.

Accessories can also be ordered separately.

Switching system



Item		Part numbers		
		PSK 40	PSK 50	PSK 60 and PSK 90
1	Switches			
	– Reed sensor	R9871 469 49	R9871 469 49	R9871 469 49
	– Hall sensor	R9871 461 25	R9871 461 25	R9871 461 25
2	Cable duct	R0396 620 29	R201KDUCT 5	R201KDUCT 6
3	Switching cam			
	– For PSK without cover or with cover plate	R1419 000 12	R1419 000 10	R1419 000 04
	– For PSK with sealing strip	–	R1419 000 11	R1419 000 05

Cable duct

Function

- To accommodate and secure switches
- To house cables

Mounting instructions for PSK 40

The cable duct is fastened to the same side as the switches and fixed to the end blocks of the Precision Module with socket head cap screws and washers (included in delivery).

Mounting instructions for PSK 50 to PSK 90

The cable duct is mounted to the same side as the switches by snapping it into the T-slots on the frame of the Precision Module and securing it with set screws. The set screws (M) are supplied along with the duct.

Dimensions for cable duct

Dimensions	PSK 50	PSK 60	PSK 90
A (mm)	21.7	25.2	25.2
B (mm)	15.0	15.0	15.0
C (mm)	11.5	11.5	11.5
D (mm)	16.5	16.5	16.5
M (mm)	M2.0	M2.5	M2.5

Installation dimensions for versions without cover or with cover plate

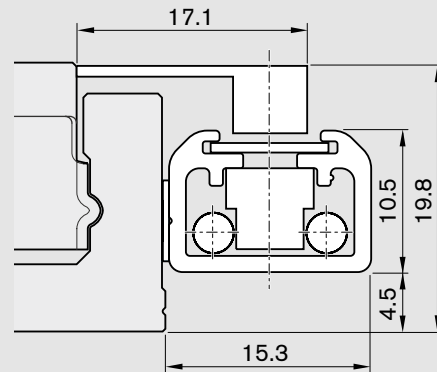
Dimensions	PSK 50	PSK 60	PSK 90
E (mm)	15.2	15.8	15.4
F (mm)	25.8	32.8	45.8
G (mm)	19.7	22.6	25.8
H (mm)	6.0	6.0	6.0

Installation dimensions for version with sealing strip

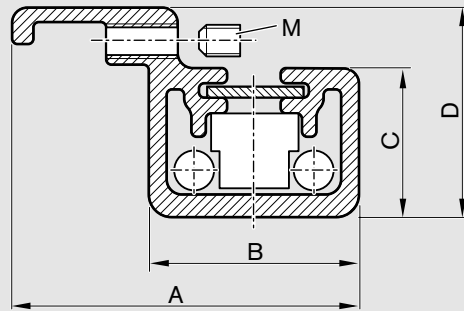
Dimensions	PSK 50	PSK 60	PSK 90
E (mm)	15.2	15.8	15.2
F (mm)	28.2	35.7	50.2
G (mm)	12.2	13.0	13.0
H (mm)	12.5	14.0	14.0
I (mm)	3.3	1.9	7.4

Cable duct PSK 40

Arrangement of switching cam and cable duct

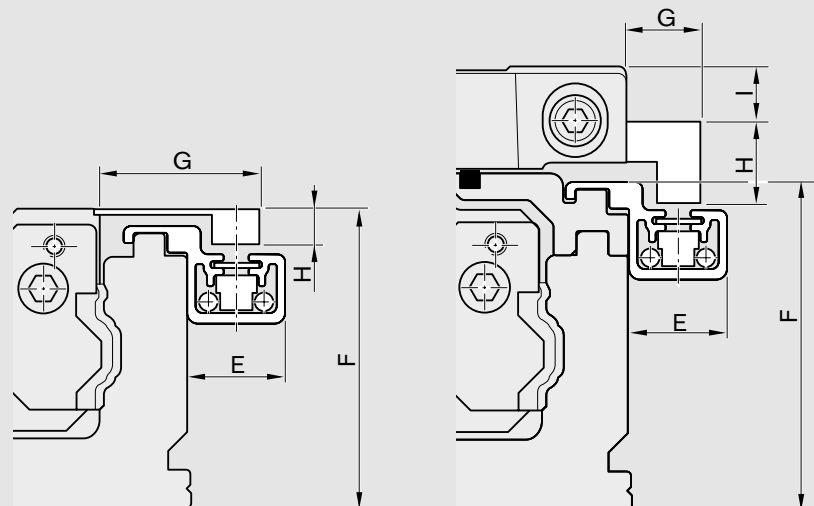


Cable duct PSK 50 to PSK 90



Arrangement of switching cam and cable duct

- PSK without cover or with cover plate
- PSK with sealing strip



Switch Mounting Arrangements

Switches

The switches for Precision Modules PSK are magnetic field sensors with potted cable.

Versions

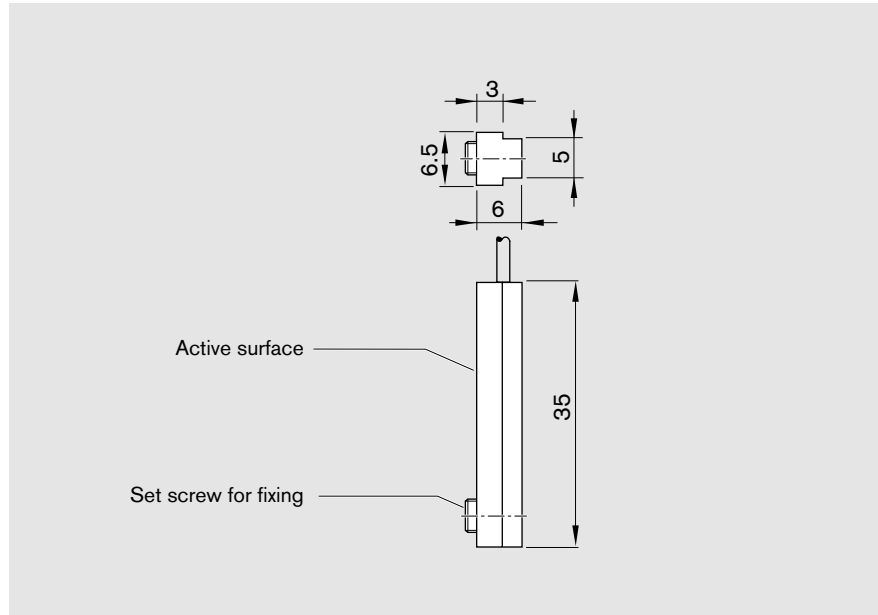
- Hall sensor, PNP NC
- Reed sensor (changeover)

Notes for mounting

Switches may only be mounted to one side of the Precision Module (left or right).

A mounting duct is required for installation of the switches.

The switches are pushed into the slots of the mounting duct and fixed with set screws.



Technical data

Hall sensor	
Contact type	PNP NC
Operating voltage	3.8–30 V DC
Current consumption	max. 10 mA
Output current	max. 20 mA
Cable length	2000 mm
Protection class	IP 66
Short-circuit protection	No

Reed sensor	
Contact type	Changeover
Switching voltage	max. 100 V DC
Switching current	max. 500 mA
Cable length	2000 mm
Protection class	IP 66
Caution: 2 switching points	

Pin assignment

