

Lube Ports

General notes

The lubrication system on Precision Modules has been designed for grease lubricants (grease gun). The lube port supplies lubricant to both the Rail System guideway and the Precision Ball Screw Assembly. If the module has two carriages, **both** of these must be lubricated.

Lubricant

Lithium soap grease	PSK 40	PSK 50 to PSK 90
DIN 51825	KP00K	KP2K
DIN 51818	NLGI 00	NLGI 2

PSK without cover

- PSK 40: One-point lubrication is possible via the lube port for grease gun on each carriage. Remove the set screw from the lube hole, apply lubricant, then drive the set screw in again.
- PSK 50, PSK 60, PSK 90: One-point lubrication at either of the two funnel-type lube nipples DIN 3405-D3 per carriage.
- One-point lubrication through customer-built attachment: This can be achieved in all PSK types by using the lube port in the carriage. The lube ports are closed with set screws for shipment. Before using the lube ports, the set screws must be removed and O-rings inserted to seal off the customer-built attachment.

Precision Module	O-ring DIN 3771	Part numbers
PSK 40 to PSK 60	3 x 1	R3411 118 01
PSK 90	5 x 1.5	R3411 108 01

PSK with cover plate or sealing strip

One-point lubrication at either of the two funnel-type lube nipples (1) DIN 3405-D3 per carriage.

For short-stroke applications, please contact us regarding the lubrication arrangements:

- PSK 40: stroke < 50 mm
- PSK 50: stroke < 70 mm
- PSK 60: stroke < 95 mm
- PSK 90: stroke < 135 mm

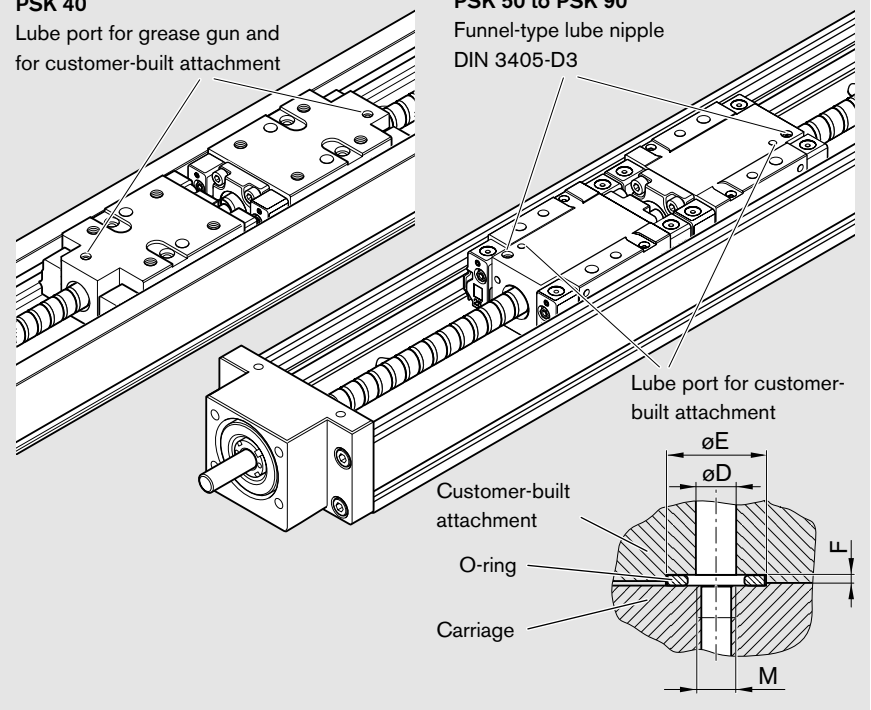
Without cover

PSK 40

Lube port for grease gun and for customer-built attachment

PSK 50 to PSK 90

Funnel-type lube nipple
DIN 3405-D3

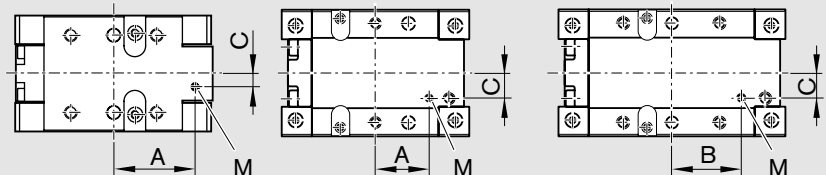


Carriage: standard length

PSK 40

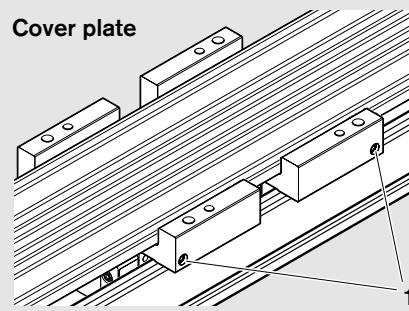
PSK 50 to PSK 90

Carriage: long



Precision Module	PSK 40	PSK 50	PSK 60	PSK 90
A (mm)	19.0	18.2	16.0	24.6
B (mm)	–	–	22.0	33.3
C (mm)	3.0	6.5	9.0	12.0
D (mm)	2.5	2.5	2.5	4.0
E (mm)	5.0	5.0	5.0	8.0
F (mm)	0.6 +0.1	0.6 +0.1	0.7 +0.1	0.5 +0.1
M (mm)	M2	M2.5	M3	M4

Cover plate



Sealing strip

