

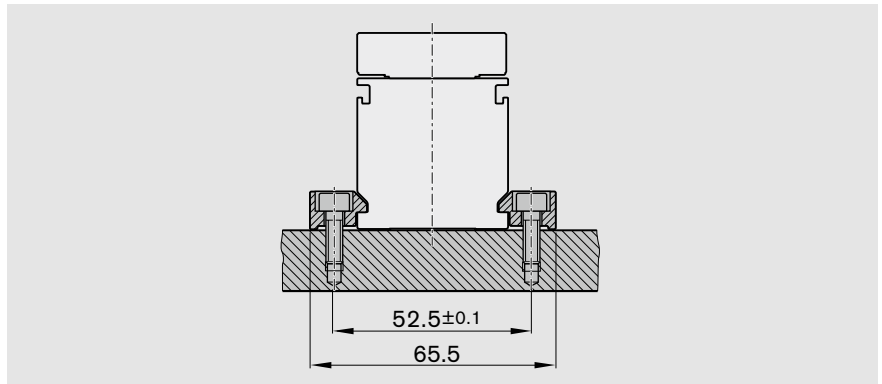
# Mounting

## General notes

### Clamping fixtures

The modules are mounted using clamping fixtures which engage in the T-slots on the side of the frame.

**⚠ Do not mount or support the Linear Module by the end blocks or end enclosures!**



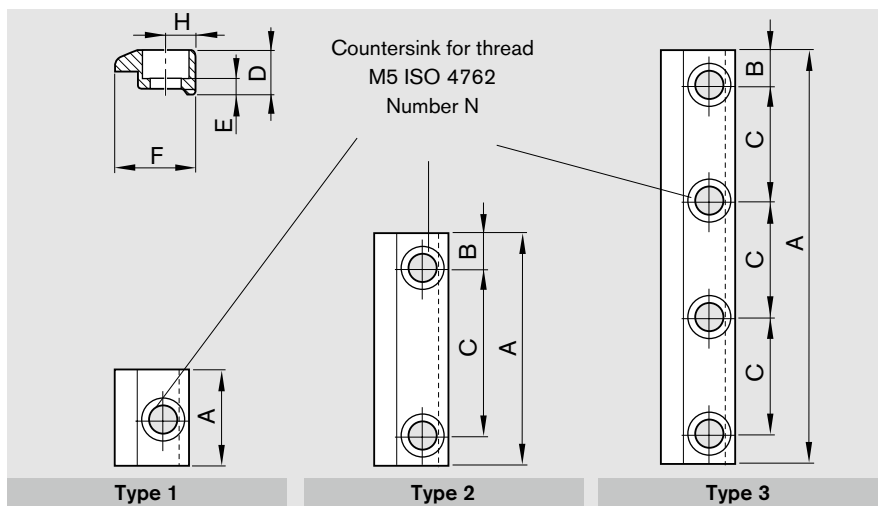
## Clamping fixtures

Recommended number of clamping fixtures:

- Type 1: 6 pieces per side
- Type 2: 4 pieces per side
- Type 3: 3 pieces per side

### Tightening torque

			<b>M5</b>
<b>8.8</b>		(Nm) max.	5.5

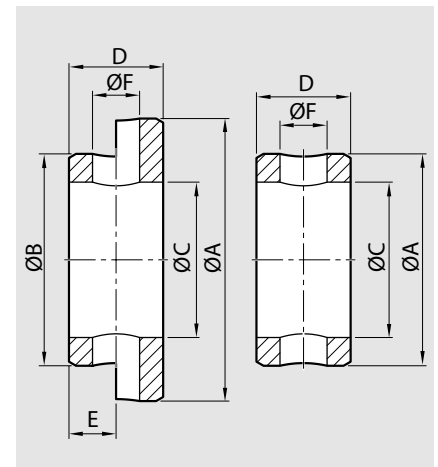


Module	for	Type	Number of holes	Dimensions (mm)								Part number
				N	A	B	C	D	E	F	H	
MKK 12-40	M5	1	1	1	22	-	-	10	4.8	15	6.5	R1419 010 01
MKR 12-40		2	2	2	57	8.5	40					R1419 010 43
		3	4	3	77	8.5	20					R1419 010 44

## Centering rings

The centering ring serves as a positioning aid. It creates a positive-locking connection with good reproducibility.

Material: steel (stainless)



Module	Centering ring size	Part numbers	Dimensions (mm)						
			A	B	C	D	E	ØF	
MKK 12-40	7	R0396 605 43	7	-	5.5	3	-	1.6	
MKR 12-40	7-5	R0396 605 47	7	5	3.4	3	1.5	1.6	
	9-7	R0396 605 49	9	7	5.5	3.5	1.5	1.6	
	12-7	R0396 605 77	12	7	5.5	3.5	1.5	1.6	