

# Mounting

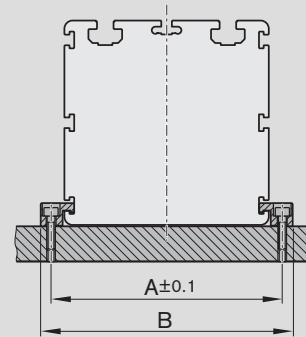
## General notes

The modules are mounted using clamping fixtures which engage in the T-slots on the side of the frame.

## Clamping fixtures

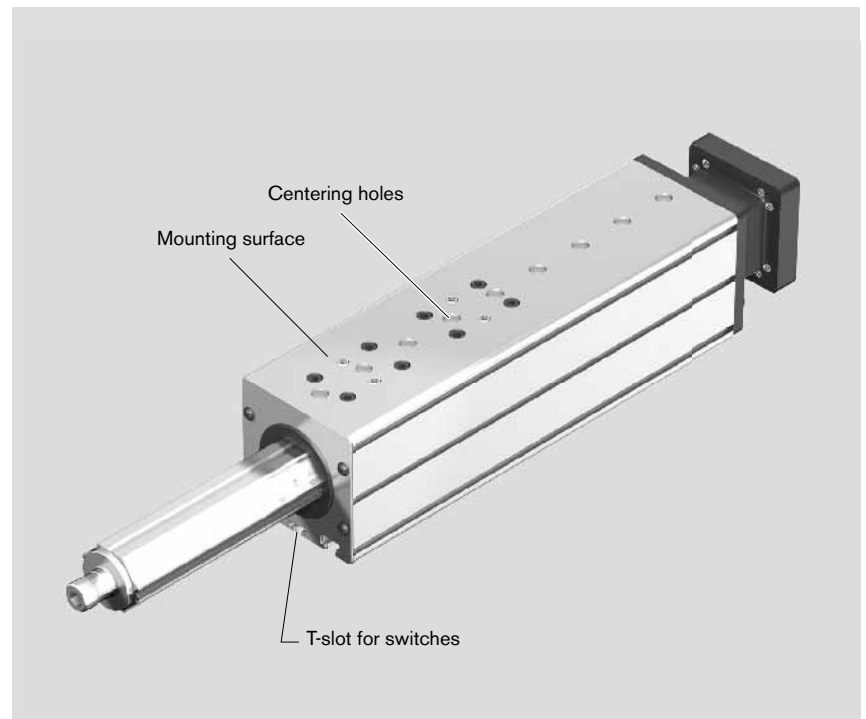
Size	Dimensions (mm)	
	A	B
VKK 15-70	86	100
VKK 25-100	116	130

## Fastening with clamping fixtures



## Mounting surface

The Feed Module may only be installed/connected to other modules by the mounting surface with the centering holes.

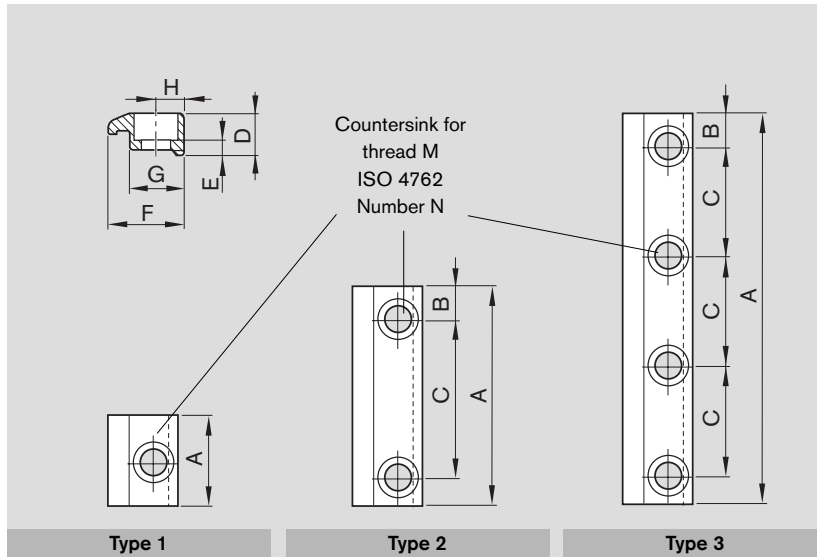


# Mounting Accessories

## Clamping fixtures

Recommended number of clamping fixtures:

- Type 1: 4 pieces per side
- Type 2: 2 pieces per side
- Type 3: 1 piece per side



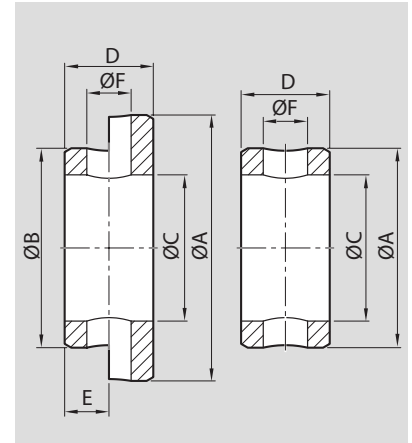
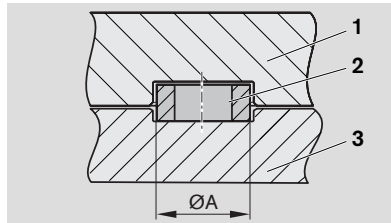
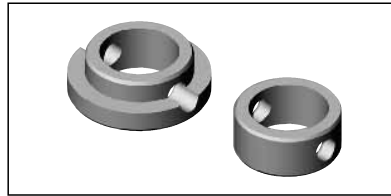
Size	For thread	Type	Number of holes	Dimensions (mm)								Part number
				A	B	C	D	E	F	G	H	
VKK 15-70	M5	3	4	107	8.5	30	11.5	4.8	19.3	14	7	R0375 410 02
		3	4	77	8.5	20		4.8				R0375 410 26
VKK 15-70 VKK 25-100	M6	1	1	25	-	-	11.5	5.3	19.3	14	7	R0375 510 00
		3	4	142	11	40		5.3				R0375 510 02
		2	2	72	11	50		3.2				R0375 510 09
		2	2	62	11	40		3.2				R0375 510 11
		2	2	47	8.5	30		5.3				R0375 510 23

**Centering rings**

The centering rings serve as a positioning aid. They create positive-locking connections with good reproducibility.

Material: steel (stainless)

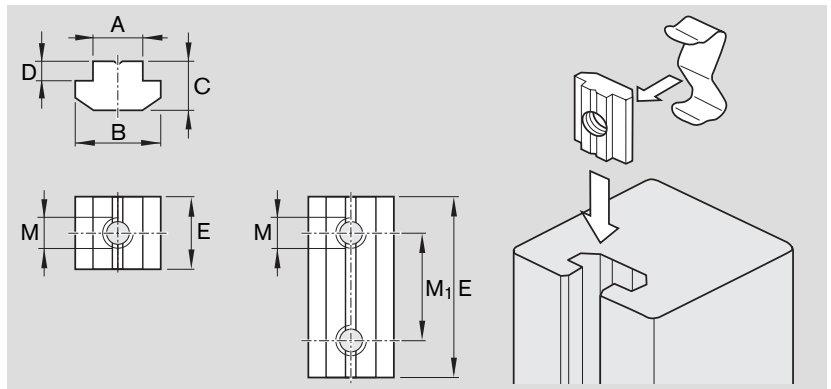
- 1 Feed Module
- 2 Centering ring
- 3 Customer's attachment



Size	Centering ring size	Part number	Dimensions (mm)					
			A	B	C	D	E	ØF
VKK 15-70	9	R0396 605 44	k6	k6	±0.1	-0.2	+0.2	
	12-9	R0396 605 50	9	-	6.6	4	-	2
VKK 25-100	12	R0396 605 45	12	-	9	4	-	2
	16-12	R0396 605 51	16	12	9	5	2	2

**Sliding blocks and springs**

For mounting attachments using the T-slots



Size	For thread	Dimensions (mm)						Part number	
		A	B	C	D	E	M <sub>1</sub>	Sliding block	Spring
VKK 15-70	M4	6	11.5	4	1	12	-	3 842 523 140	3 842 523 145
	M5					45	30	R0391 710 09	-
	M5					12	-	3 842 523 142	3 842 523 145
VKK 25-100	M5	8	16	6	2	16	-	3 842 514 928	3 842 516 685
	M5					16	-	3 842 514 929	3 842 516 685
	M6					16	-	3 842 514 930	3 842 516 685
	M6					50	36	R0391 710 08	-

**Tightening torques of the fastening screws**

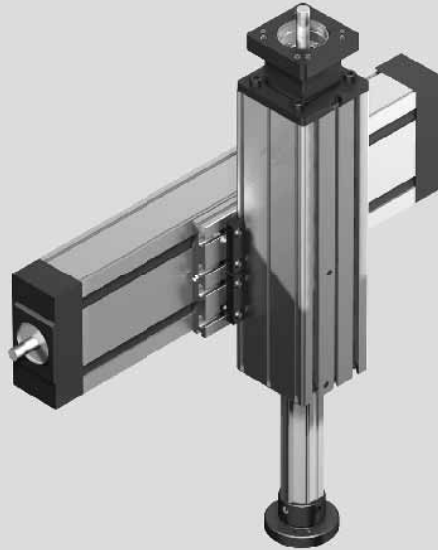
at friction factor 0.125  
Strength class 8.8

		M4	M5	M6	M8
8.8	Nm max.	2.7	5.5	9.5	23

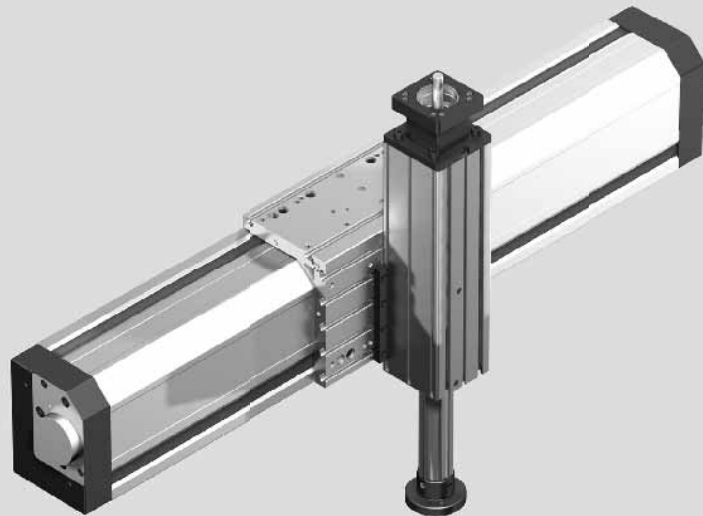
## Mounting to Installed Modules

- No intermediate plates required
- Positive locking via centering rings (camoLINE compatible)
- Easy mounting with clamping fixtures

Feed Module VKK mounted to Compact Module CKK



Feed Module VKK mounted to Bridge Module BKK



# Connection Elements

## Standard flange

### Function

- Connection of customer attachments

### Kit consisting of:

- 1 Standard flange
- 2 Set screw (2x M10x12, ISO 4026)

### Note for ordering

The standard flange can **ONLY** be ordered by specifying carriage option 02 (carriage with standard flange).

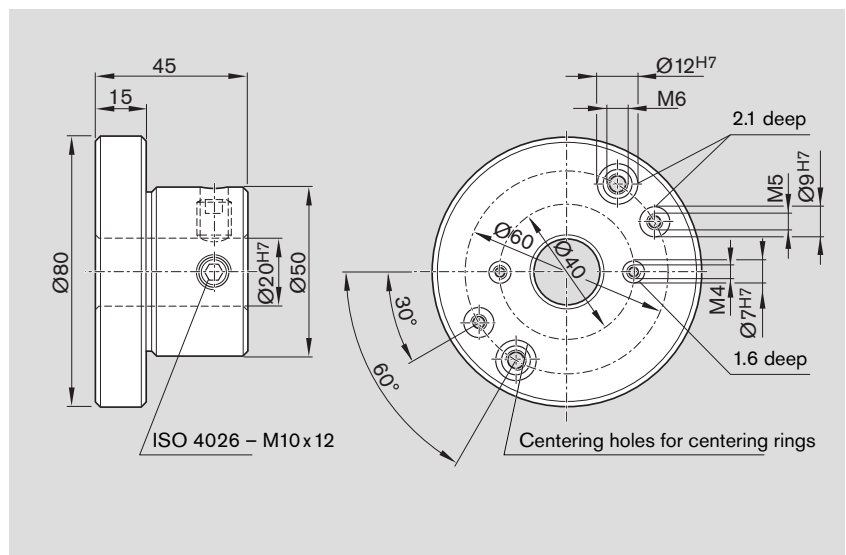
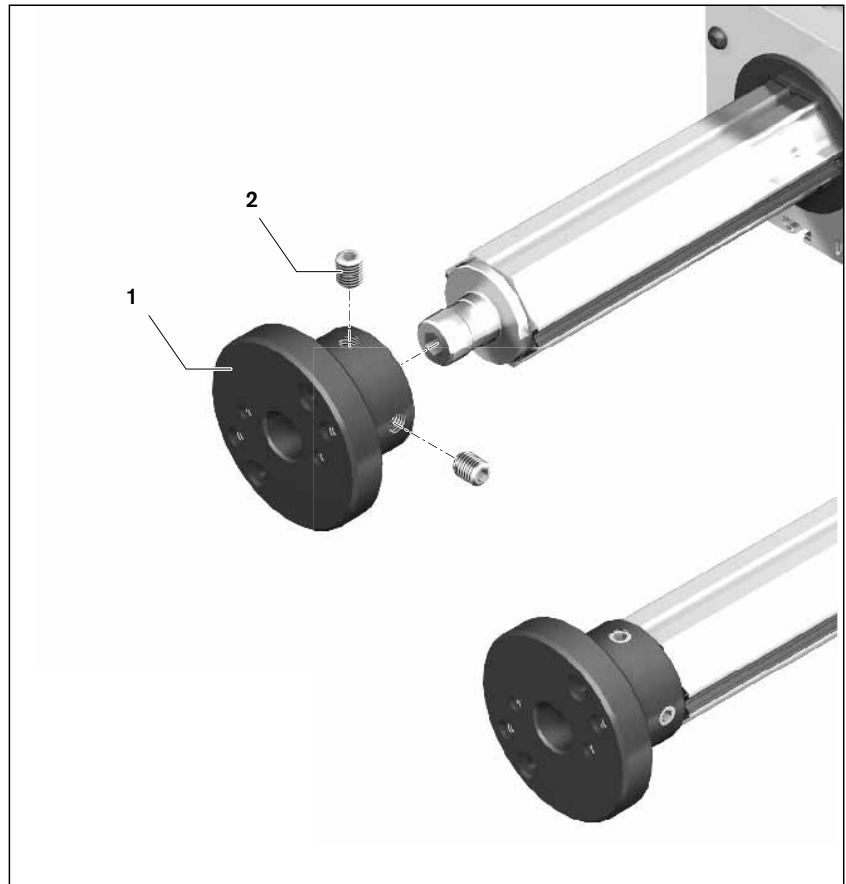
### Mounting instructions

The standard flange is fastened to the mounting interface on the thrust rod of the Feed Module using two M10 set screws.

**⚠** If the standard flange is removed, the set screws must be secured again (e.g. using a medium-strength, liquid threadlocker adhesive) when it is re-installed!

### Tightening torque for the set screws

30 Nm



# Connection Elements

## Connection of Gripper GSP

### Function

- Connection of Pneumatic Grippers, Type GSP (camoLINE range)

### Kit consisting of:

- 1 Connection plate
- 2 Mounting screws
- 3 Centering rings

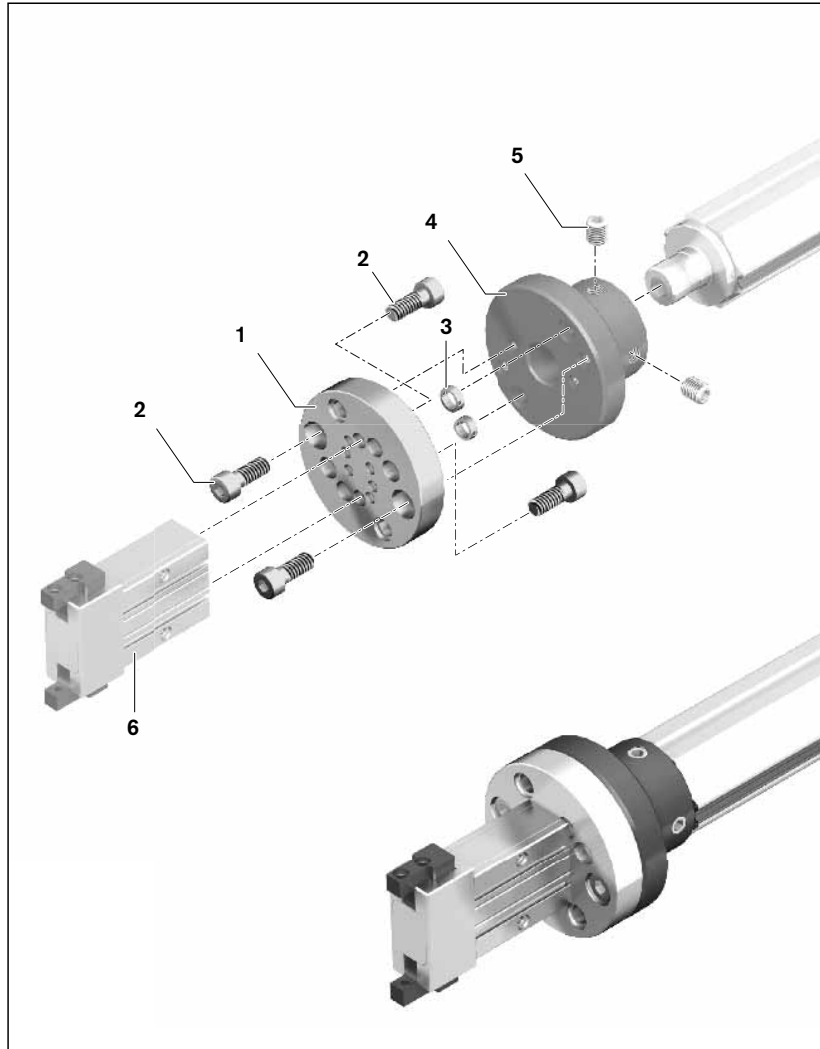
Additional parts (not included in kit):

- 4 Standard flange
- 5 Set screws (M10x12, ISO 4026)
- 6 Gripper GSP

### Mounting instructions


The standard flange (4) is required for mounting of the connection plate. Please order this by specifying carriage option 02 (carriage with standard flange). For details and dimensions, see page 35.

**⚠** If the standard flange is removed, it must be secured with the set screws again when it is re-installed!



Gripper GSP	Connection plate kit	
	Part number	Weight (kg)
10	R1419 000 25	0.2
16	R1419 000 26	
20	R1419 000 27	
25	R1419 000 28	
32	R1419 000 29	

### Tightening torques for the fastening screws

		M3	M4	M5	M6	M8
8.8	 Nm max.	1.3	2.7	5.5	9.5	23

### Tightening torque for the standard flange set screws

30 Nm

For details of the Gripper types, please refer to the "camoLINE" catalog.

## Connection of Rotary Compact Module RCM

### Function

- Connection of Rotary Compact Modules, Type RCM (camoLINE range)

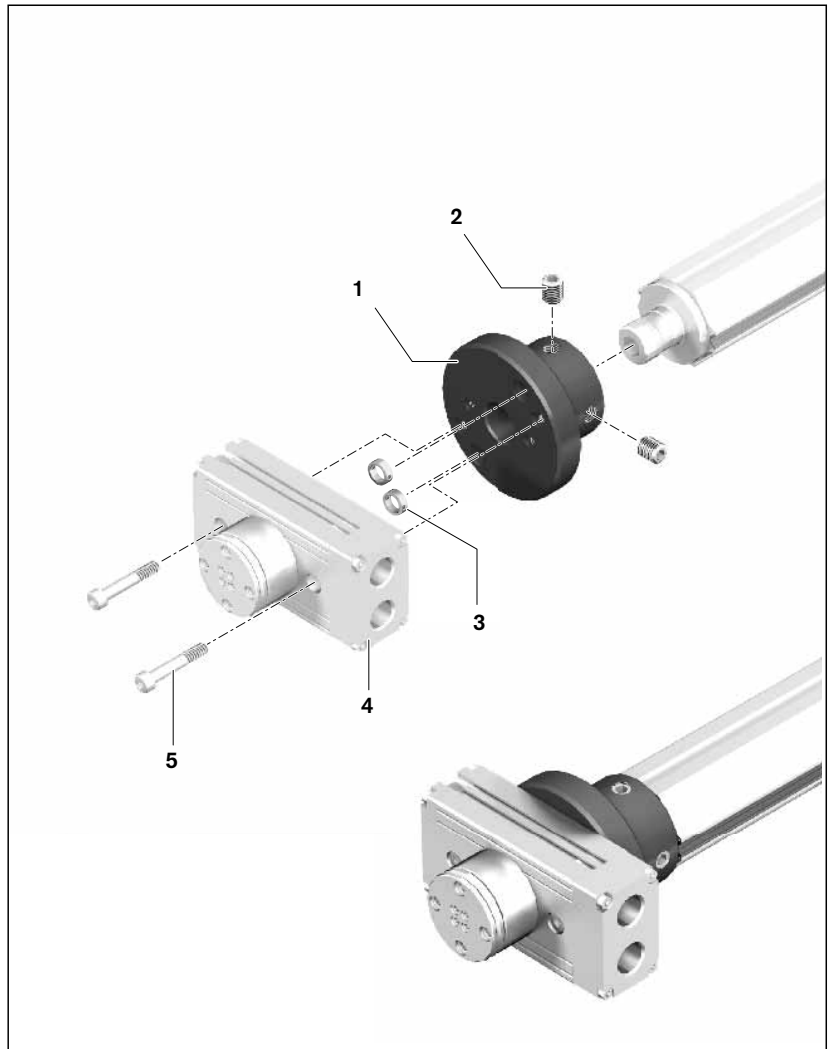
### Mounting instructions

The standard flange is required for mounting of the Rotary Compact Module RCM. Please order this by specifying carriage option 02 (carriage with standard flange). For details and dimensions, see page 35.

**⚠ If the standard flange is removed, it must be secured with the set screws again when it is re-installed!**

- 1 Standard flange
- 2 Set screws (M10x12, ISO 4026)
- 3 Centering rings
- 4 Rotary Compact Module RCM
- 5 Fastening screws (not included in delivery)

Rotary Compact Module RCM	Required fastening screws	Quantity
08	M4x25 – ISO4762-8.8	2
12	M5x30 – ISO4762-8.8	
16	M5x40 – ISO4762-8.8	
20	M6x45 – ISO4762-8.8	
25	M6x50 – ISO4762-8.8	



### Tightening torques for the fastening screws

		M3	M4	M5	M6	M8
8.8	Nm max.	1.3	2.7	5.5	9.5	23

### Tightening torque for the standard flange set screws

30 Nm

For details of the Rotary Compact Module types, please refer to the "camoLINE" catalog.