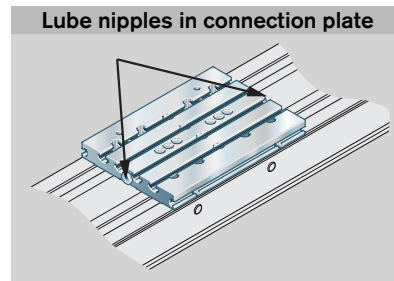
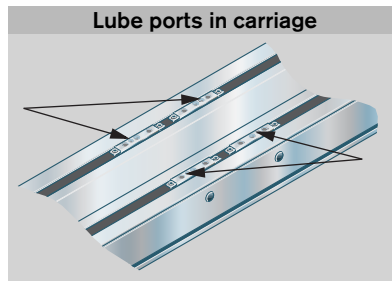
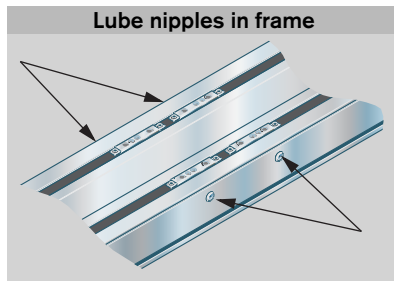


Lubrication



Compact Module CKK

Lube nipple in frame

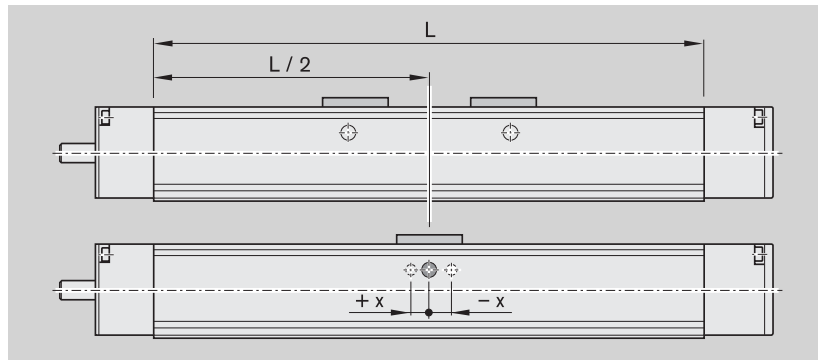
On each side of the frame of the CKK Compact Modules there are holes through which the lube nipples in the carriage can be accessed. Lubrication from one side only is sufficient.

With two carriages:

- Carriage to the center – move to position L/2, then all lube nipples will be accessible.

With one carriage:

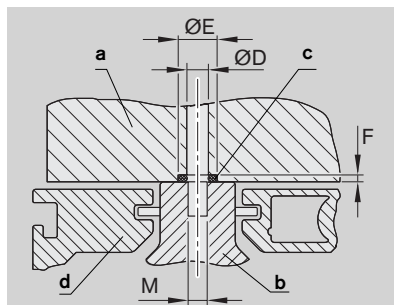
- The lube nipples are not always located at the middle of the carriage. Move carriage to position indicated in table.



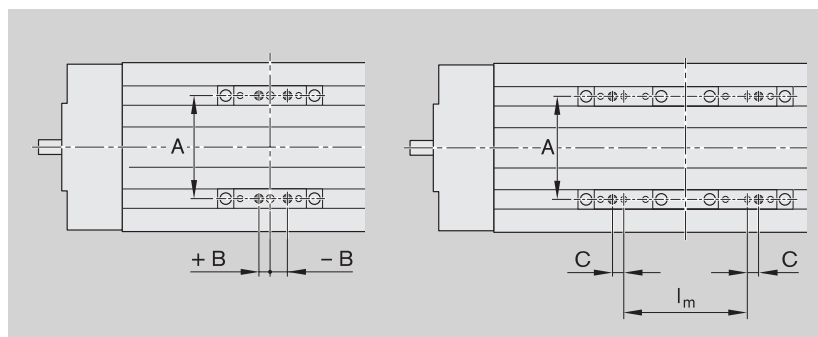
Size	x (mm)	Lube nipples
12-90	0	DIN 3405-D3
15-110	7	DIN 3405-D3
20-145	7	DIN 3405-D3
25-200	-15	DIN 3405-AM6

Lube ports for carriage attachments

The lube ports are sealed with a set screw in the factory before shipment. To use, install according to the specified connection dimensions and use O-rings to seal the interface.



- a) Customer-built attachment
- b) Carriage
- c) O-ring
- d) Frame



Size	Dimensions (mm)									O-ring for DIN 3771	
	A	B	C	D	E	F	M	l _m	Part number		
12-90	54	6.0	6.0	Ø3	Ø5 +0.2	0.6 -0.1	M3	65	3 x 1.5	R3411 001 01	
15-110	66	6.5	6.5	Ø3	Ø5	0.6	M3	85	3 x 1.5	R3411 001 01	
20-145	88	7.0	7.0	Ø3	Ø5	0.6	M3	100	3 x 1.5	R3411 001 01	
25-200	130	-15.0	15.0	Ø5	Ø9	1.0	M4	175	5 x 1.5	R3411 108 01	

Compact Modules CKR

Lube nipple in frame

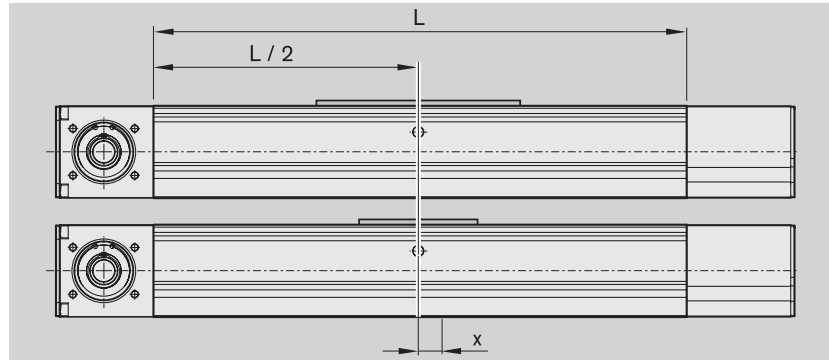
On each side of the frame of the CKR Compact Modules there are holes through which the lube nipples in the carriage can be accessed. Lubrication from one side only is sufficient.

With long carriage:

- Carriage to the center – move to position $L/2$, then all lube nipples will be accessible.

With short carriage:

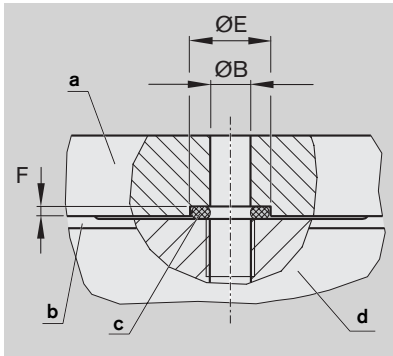
- The lube nipples are not always located at the middle of the carriage. Move carriage to position indicated in table.



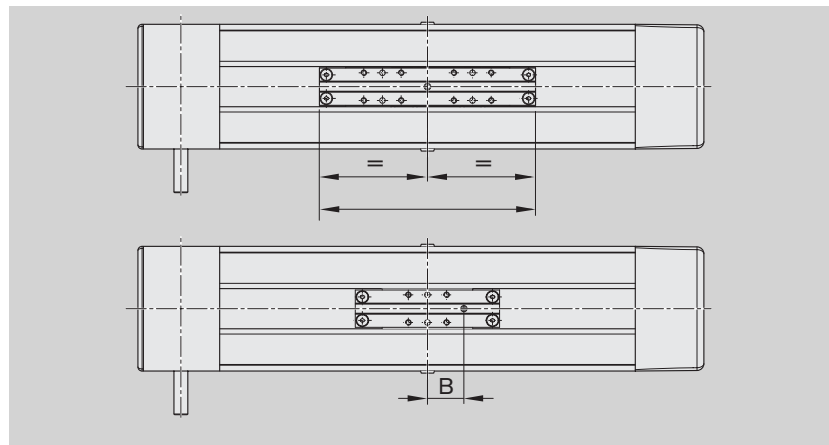
Size	x (mm)	Lube nipples
12-90	0	DIN 3405-D4
15-110	41.5	DIN 3405-AM6
20-145	50.0	DIN 3405-AM6
25-200	59.0	DIN 3405-AM8x1

Lube ports for carriage attachments

The lube ports are sealed with a set screw in the factory before shipment. To use, install according to the specified connection dimensions and use O-rings to seal the interface.



- a) Customer-built attachment
- b) Carriage
- c) O-ring
- d) Frame

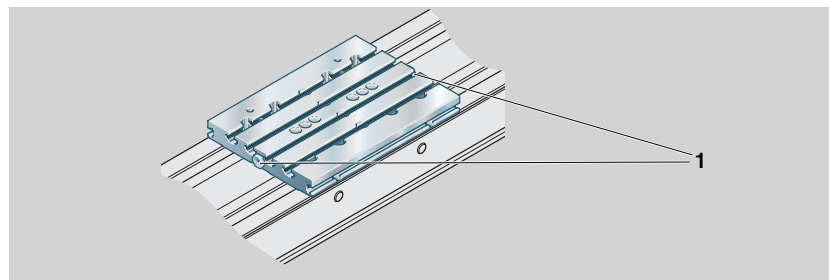


Size	Dimensions (mm)					O-ring for DIN 3771	
	B	D	E	F	M		Part number
12-90	0	Ø3	Ø5	0.6	M3	4 x 2.5	R3411 019 01
15-110	41.5	Ø3	Ø5	0.6	M3	5 x 2	R3411 109 01
20-145	50.0	Ø3	Ø5	0.6	M3	5 x 2	R3411 109 01
25-200	59.0	Ø5	Ø9	1.0	M4	8 x 2	R3411 008 01

Lube nipples in connection plates for CKK/CKR

Each connection plate has two funnel-type lube nipples (1) according to DIN 3405-AM8 located on its end faces.

Lubrication through only one of the two lube nipples is sufficient.



Short stroke for CKK/CKR

For short-stroke applications, please

consult with us about lubrication:
 Frame size 90: Stroke < 40 mm
 Frame size 110: Stroke < 50 mm
 Frame size 145: Stroke < 60 mm
 Frame size 200: Stroke < 80 mm