

## Product Overview

**Bridge Modules provide neat solutions for applications that could previously only be served by costly custom designs.**

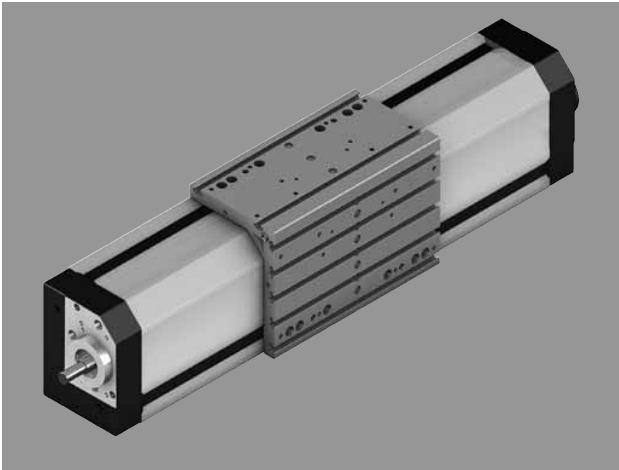
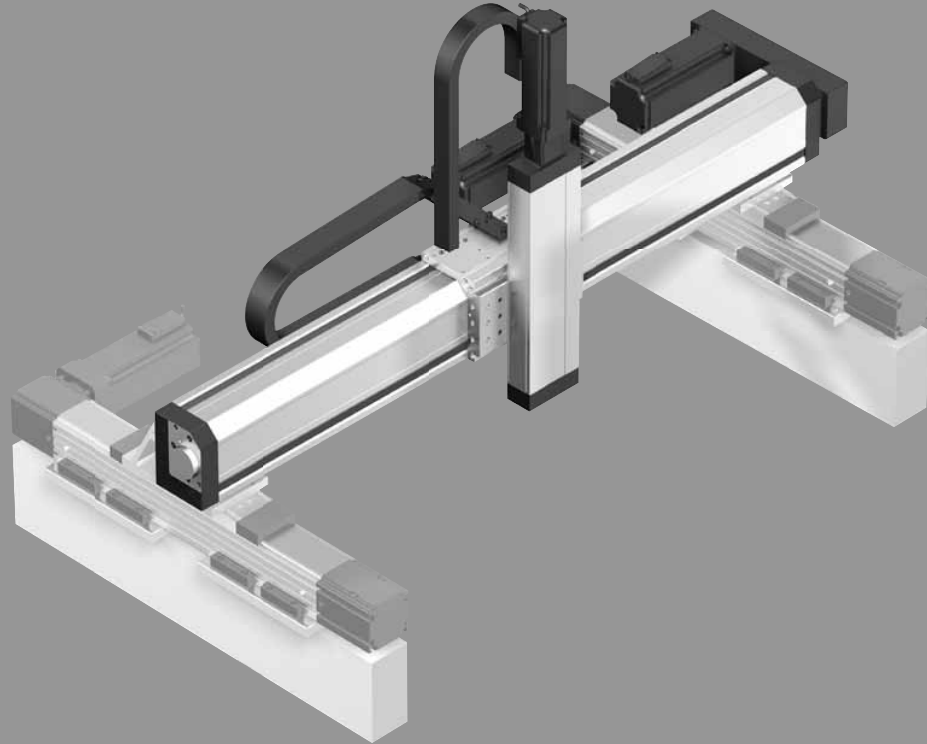
The Bridge Modules Series adds still another dimension to Rexroth's extensive range of linear motion systems. With their exceptionally rigid design and angled carriage, these modules are ideal as "y" axes in gantry configuration and as single axes to span large unsupported lengths.

**Ball screw or toothed belt drive**

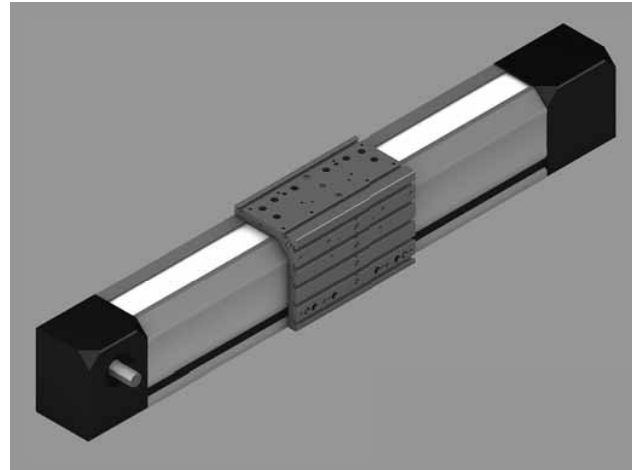
Bridge Modules come in versions with ball screw (BKK) or toothed belt (BKR) and can be combined with the most commonly used drive configurations.

**Further highlights**

- Aluminum profile frame with optimized geometry for high torsional stiffness and load carrying capacity
- Available with steel-reinforced toothed belt drive or ball screw drive
- Two Ball Rail Systems arranged at a 90° angle, with steel runner blocks with ball chain
- Fully enclosed frame with aluminum cover and polyurethane sealing strips
- Torsionally stiff angled aluminum carriage with T-slots and threaded holes offering multiple mounting possibilities
- Precise connection and alignment of attachments thanks to camoLINE technology in the carriage
- One-point lubrication via either side of the carriage
- Screw supports allow high travel speeds for ball screw version, even for long strokes
- T-slots for mounting switches
- Motor mounts, timing belt side drives and gear reducers available
- Available as complete drive units with motor, controller and control unit



Bridge Module with ball screw drive



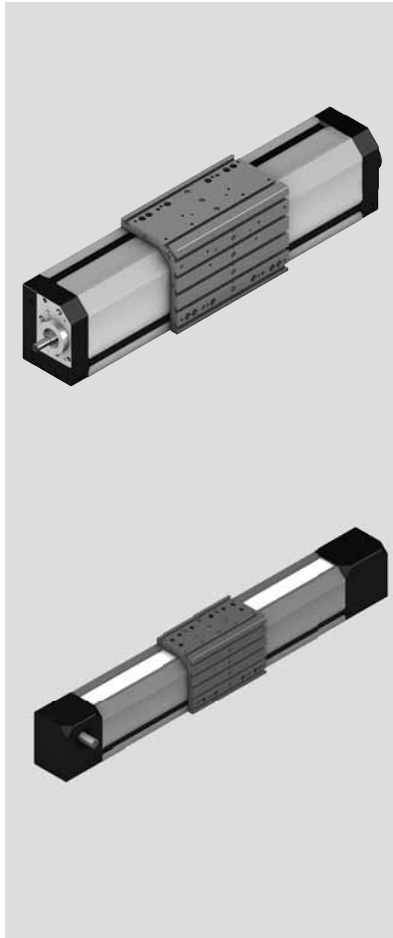
Bridge Module with toothed belt drive

Product Overview

## Motor Selection

### Motor selection based on drive controllers and control system

Several motor-controller combinations are available in order to provide the most cost-effective solution for every customer application. When sizing the drive unit, always consider the motor-controller combination. Refer to the "IndraDrive for Linear Motion Systems" catalog for more information about motors and control systems.



Digital AC servo motor MSK



Digital IndraDrive controllers

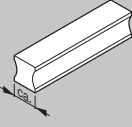
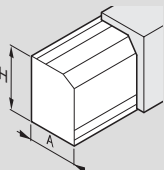




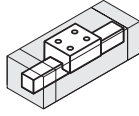
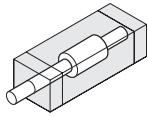
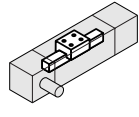
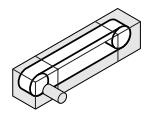
Product Overview

**Type designation (size)**

Bridge Modules are designated according to type and size.

		Type	Size
Bridge Modules (example) =		<b>B K K</b>	<b>20 -135</b>
System	=	Bridge Modules ( <b>B</b> )	
Guideway	=	Ball Rail System ( <b>K</b> )	
Drive type	=	Ball Screw ( <b>K</b> ) or Toothed Belt ( <b>R</b> )	
Guideway size	=		
Frame size	=		

**Type overview**

Type	Guideway	Drive unit	Dimensions A x H mm	L <sub>max</sub> mm	Dynamic load capacity C N
BKK	 Ball rail system	 Ball screw drive	115 x 145	5000	21900
			135 x 180	5000	56200
BKR	 Ball rail system	 Toothed belt drive	115 x 145	5800	21900
			135 x 180	5800	56200