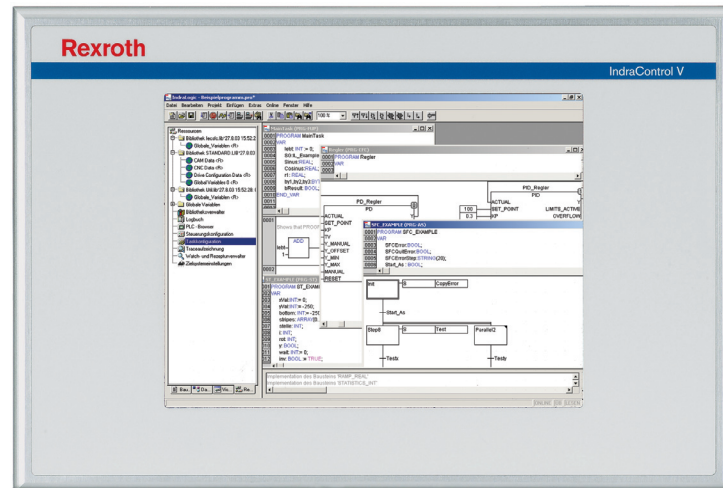


Embedded PC

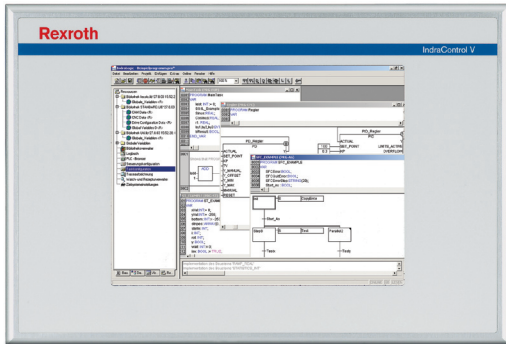
# 8,4" TFT-display and SVGA-Resolution IndraControl VEP 30



Embedded PC

**8,4" TFT-display and SVGA-Resolution ■ IndraControl VEP 30**

Documentation



## Technical data

	VEP 30.3CC	VEP 30.4DP	VEP 30.4EF
<b>Processor</b>			
<b>CPU</b>	Celeron 600MHz (Standard)		Celeron 1GHz (In preparation)
<b>Operating system</b>	Windows CE 4.2 (Standard)	Windows CE 6.0 (In preparation)	
<b>Memory</b>			
<b>Application</b>	256 MB	256 MB	512 MB
<b>Flash size</b>	128 MB		1 GB
<b>compact-flash</b>	2		
	CF sockets		
<b>Slot</b>	1		
<b>Display</b>			
<b>Type</b>	TFT		
<b>Size</b>	8.4 "		
<b>Colours / Greyscales</b>	colours		
<b>Resolution</b>	800 x 600		
<b>Handling</b>			
<b>Type</b>	Through virtual keyboard		
<b>Handling</b>	Touch screen		
<b>Function Keys</b>	0	3	0
<b>Interfaces</b>			
<b>Ethernet</b>	1 x Ethernet TCP/IP (Standard)	2 x Ethernet TCP/IP (Standard)	
<b>USB</b>	2 x USB 2.0 (Standard)		
<b>Seriell</b>	1 x RS232 (Standard)		
<b>Others</b>	1 x Ethernet TCP/IP (Standard)	-	
<b>Fieldbus</b>			
<b>SERCOS III</b>	-	4 x SERCOS III (Standard)	
<b>PROFIBUS DP</b>	1 x PROFIBUS DP-Master (Option)		
<b>Others</b>	-	2 x fieldbus interfaces (Option)	
<b>Electric data</b>			

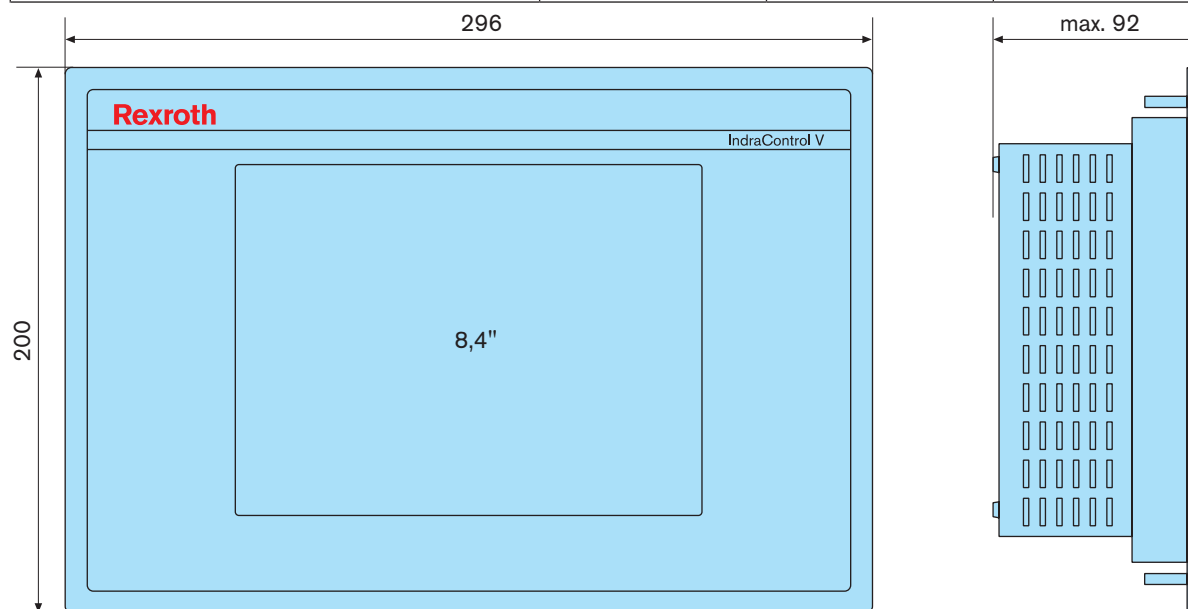
Embedded PC

**8,4" TFT-display and SVGA-Resolution ■ IndraControl VEP 30**

<b>Voltage supply</b>	<b>U</b>	24 V DC	
<b>Min.</b>	<b>U<sub>min</sub></b>	19 V DC	
<b>Max.</b>	<b>U<sub>max</sub></b>	30 V DC	
<b>Input Power</b>	<b>[W]</b>	53	50
<b>USV</b>	Short-time UPS for data backup on compact-flash		
<b>Protection</b>			
<b>Category Total</b>	-	IP54	IP20
<b>Category Front</b>	IP65	-	IP65
<b>Weight</b>			
<b>Weight</b>	2,3 kg	2,3 kg	2,3 kg

**Dimensions**

		VEP 30.3CC	VEP 30.4DP	VEP 30.4EF
<b>Dimensions</b>				
<b>Height H</b>	<b>[mm]</b>	200	0	200
<b>Width W</b>	<b>[mm]</b>	296	0	296
<b>Depth D</b>	<b>[mm]</b>	75	0	88

**Type Code**

Type Code	Description	Part No.:
VEP30.3CCN-256NN-MAD-128-NN-FW	IndraControl VEP 30, visualization	R911170849
VEP30.3CCU-256NA-MAD-128-NN-FW	IndraControl VEP 30, PROFIBUS DP, control component	R911170853
VEP30.3DKN-256NN-MAD-128-CG-FW	IndraControl VEP 30, CG, PROFIBUS DP (in preparation)	R911171626

Embedded PC

**8,4" TFT-display and SVGA-Resolution ■ IndraControl VEP 30**

Type Code	Description	Part No.:
VEP30.4EFU-512NC-MAD-1G0-NN-FW	IndraControl VEP 30, PROFIBUS DP, control component (in preparation)	R911170857
VEP30.4EFN-512NN-MAD-1G0-NN-FW	IndraControl VEP 30, USB, visualization (in preparation)	R911171083
VEP30.4EFU-5123C-MBD-1G0-NN-FW	IndraControl VEP 30, 2 x SERCOS III, control component (in preparation)	R911170825

**Firmware**

Type Code	Description	Part No.:
FWA-VEP*03-CWL-01VRS-D0	Firmware for IndraControl VEP xx.3	R911170958
FWA-VEP*04-CW*-09VRS-D0	Firmware for IndraControl VEP xx.4 (in preparation)	R911324144

**Documentation**

Type Code	Description	Part No.:
DOK-SUPPL*-VEP**3****-PR01-DE-P	VEP	R911323263
DOK-SUPPL*-VEP**3****-PR01-EN-P	VEP	R911323264
DOK-SUPPL*-VEP*XX.4***-PR01-DE-P	VEP	R911323873
DOK-SUPPL*-VEP*XX.4***-PR01-EN-P	VEP	R911323874

**Bosch Rexroth AG**

Electric Drives and Controls

P.O. Box 13 57

97803 Lohr, Germany

Bgm.-Dr.-Nebel-Str. 2

97816 Lohr, Germany

Phone +49 9352-40-0

Fax +49 9352-40-4885

[www.boschrexroth.com/electrics](http://www.boschrexroth.com/electrics)

The data specified above only serve to describe the product.

As our products are constantly being further developed, no statements concerning a certain condition or suitability for a certain application can be derived from our information. The information given does not release the user from the obligation of own judgment and verification. It must be remembered that our products are subject to a natural process of wear and aging.