

Livingston & Haven's S3 Group designs, manufactures and services hydraulic, lubrication and automation systems to provide innovative motion control solutions for customer's hydraulic and controls fabrication and implementation requirements.



*Systems • Services • Solutions*

## MANUFACTURING

Whether it is a pump/motor group, custom control panel, power unit or a combination of all three, S3 can design and produce your system as quickly as possible while maintaining the quality of the unit. With our engineering and manufacturing capabilities, we can offer you:

- Highly Precise Testing Equipment
- Custom Hose Assemblies
- Custom Tube Assemblies
- Integrated Power Units
- Lubrication Systems
- Process Pumping Packages



## INSTALLATION

S3 seamlessly integrates new systems or parts into your existing equipment by working with your controls and maintenance personnel to install and commission your Livingston & Haven system or component. Our mobile service vehicles can perform:

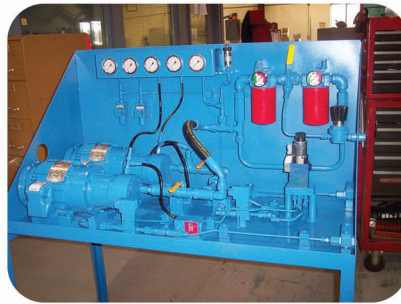
- Pipe Fabrication
- Tube and Hose Assembly Fabrication
- System Start-Up and Commissioning
- Pressure Testing
- System Flushing
- Oil Filtration



## ENGINEERING

S3 works directly with you to provide specific solutions to your hydraulic and controls fabrication and implementation needs. We can provide:

- Systems Documentation
- System Design
- System Fabrication
- On-Site Coordination of Your System Installation
- All-Phase System Rebuilds and Retrofits



## REPAIRS

S3 provides complete hydraulic repair service. Using custom diagnostic equipment, we evaluate performance characteristics after the repair and recommend additional solutions. Benefits of partnering with our repair group include:

- Exceptional Service Technicians
- Providing Long-Term Solutions
- Prompt Communication
- Attention to Detail



## REMOTE DIAGNOSTICS

S3 can connect your production equipment to the Internet to give you absolute power over your system. Our remote diagnostic equipment can tell you:

- If a production machine is running
- If there are any maintenance alarms on the production machine
- If a filter needs to be changed in a hydraulic power unit

