

# EasyHandling – more than just a kit of components

Easier. Faster. More economical.



## EasyHandling – the shortest route to the perfect application



Rexroth's EasyHandling makes the automation of handling systems much easier, faster and more economical. EasyHandling is more than just a modular set of mechanical components. It completes the evolutionary transition to a comprehensive system solution: drive and control technologies, standardized interfaces and a revolutionary new commissioning assistant, all of which are perfectly matched. Perfect interaction between these elements reduces engineering, assembly and commissioning time by up to 80 percent.

## Easier

### **The simpler way to get the result you want**

EasyHandling takes care of a lot of the work for users who are implementing tailored solutions, and it gives them the help they really need in all phases of the project.

## Faster

### **The faster route to the optimal application**

EasyHandling offers excellent scalability. It will take you next to no time to make the changes necessary to get your system ready to meet current and future needs.

## More economical

### **Greater efficiency saves you money**

EasyHandling is designed to optimize the process from engineering right through to the operational phase. This reduces the strain on resources across the board.

### **Engineering without the distractions**

To support the user during component selection, EasyHandling generates recommendations which include information on parts lists, technical data and CAD drawings.

### **Fast assembly for immediate deployment**

Positive-locking connections ensure that all mechanical components are precisely aligned right from the start and fit perfectly together.

### **Commissioning in no time at all**

The intelligent EasyWizard commissioning assistant virtually turns parameterization and configuration into child's play. It only takes a few clicks to get your system operational in next to no time.

### **Production efficiency**

Rexroth provides an impressive set of intelligent application tools to boost effectivity. To ensure that maintenance intervals are maintained, the drive unit software provides the operator with maintenance instructions that correspond to the specific run times and travel paths. As a result, service life increases and there is less risk of malfunction.

### **Free to go where the market takes you**

Get ready now for tomorrow's market developments. Open architecture is one of the impressive features of EasyHandling systems. Versatile, adaptable mechanical and electrical components give you the flexibility to react quickly and efficiently to new production requirements.

# The perfect system solution for the perfect application

## EasyHandling

basic

comfort

advanced

Mechanical and pneumatic components,  
grippers, rotary modules, motors, sensors,  
single- and multi-axis linear systems  
+ pre-parameterized servo drives and  
the commissioning assistant

**+ pre-configured, scalable controls**

Mechanical and pneumatic components, grippers, rotary modules,  
motors, sensors, single- and multi-axis linear systems

**+ pre-parameterized servo drives and the commissioning assistant**

**Mechanical and pneumatic components, grippers, rotary modules,  
motors, sensors, single- and multi-axis linear systems**

Mechanics

Drives

Controls

The three variants – basic, comfort and advanced – provide outstanding solutions for all layers of assembly and handling automation. With access to the largest selection of modular mechatronic, drive and control components on the market, users can develop and deploy solutions for any handling application. The highly versatile architecture supports a large number of module combinations.

The resulting automation systems are the perfect future-proof solutions for the specific application. As product life cycles continue to contract, the demands placed on today's automation systems are evolving faster than ever before. The EasyHandling concept gives you the tools you need to react swiftly and efficiently to changing market conditions.



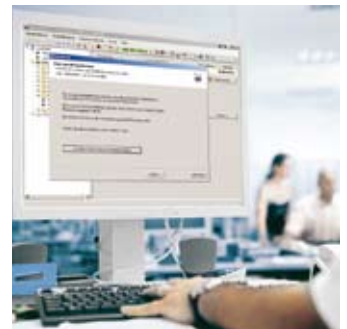
#### basic – mechatronics made to order

EasyHandling covers among other things single- and multi-axis linear systems for any type of mechanical drive technology. The modules are delivered complete with the motors or pneumatic drives to go with them. Grippers, rotary modules and sensors are the perfect extension to the product portfolio.



#### comfort – get off to a faster start

EasyHandling comfort adds pre-parameterized, multi-protocol-enabled servo drives to the basic component set. With the truly exceptional EasyWizard commissioning assistant, you only need to make a few entries to get your system up and running.



#### advanced – for highest demands

EasyHandling advanced in combination with scalable, pre-configured motion logic control systems makes configuration and handling even easier. Pre-defined functions eliminate the need for extensive, time-consuming programming and cover more than 90 percent of all handling applications.



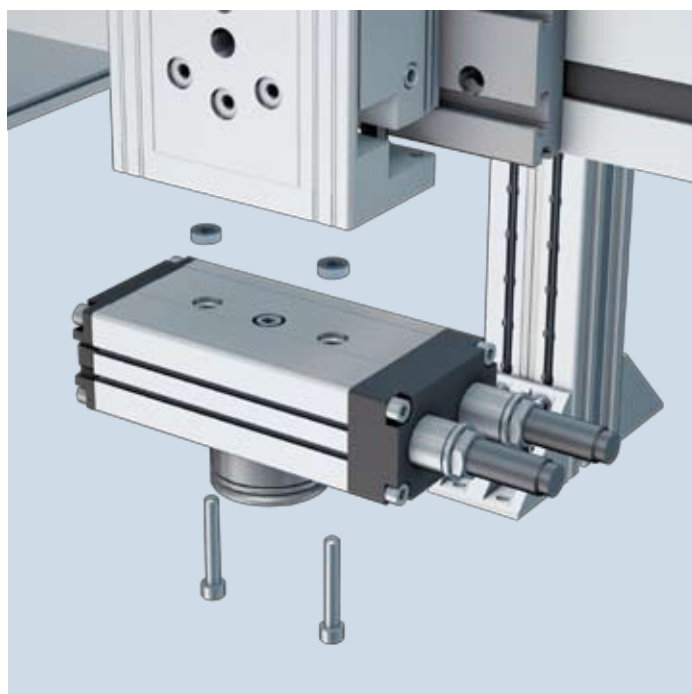
# Always the best solution for every application



## Engineering simplicity speeds up implementation

EasyHandling means maximum ease of configuration. Starting right back in the engineering phase, the selection tools simplify and accelerate the design of the best possible handling system. Users merely need to enter a few parameters to generate recommendations which help determine which best combination of modules is most suitable. The engineering software furnishes technical component information along with detailed CAD data for the entire system, helping the engineers to handle queries.

- ▶ You invest up to 70 percent less time and money.



## Minimum assembly time, maximum efficiency

EasyHandling also substantially reduces the amount of assembly effort. All of the mechanical modules have positive-locking connections. They fit together perfectly without the need for time-consuming alignment. "Safety on Board" technology built right into the drives simplifies the engineering process and ensures maximum safety for man and machine.

- ▶ You invest up to 60 percent less time and money.



### **Rapid commissioning gives you more flexibility**

Configuration of the electrical components using the intelligent EasyWizard commissioning assistant couldn't be easier. All of the axis-specific electrical and mechanical data has been pre-entered for you. This reduces the amount of effort it takes to configure a complete axis. It only takes a few minutes to get up and running.

- ▶ You invest up to 90 percent less time and money.



### **Low-cost operation combined with energy efficiency**

EasyHandling Systeme come with intelligent diagnostic tools which calculate service intervals based on actual load and wear.

EasyHandling fully exploits the benefits of the Rexroth 4EE approach to energy efficiency throughout all phases of the machine life cycle. The drives are not over-dimensioned, the overall efficiency of all components working together is optimized and every opportunity is taken to reduce energy consumption.

**Bosch Rexroth AG**

Electric Drives and Controls

P.O. Box 13 57

97803 Lohr, Germany

Bgm.-Dr.-Nebel-Str. 2

97816 Lohr, Germany

Phone +49 9352 40-0

Fax +49 9352 40-4885

[www.boschrexroth.com/electrics](http://www.boschrexroth.com/electrics)

Find your local contact person here:

[www.boschrexroth.com/addresses-dcl](http://www.boschrexroth.com/addresses-dcl)